



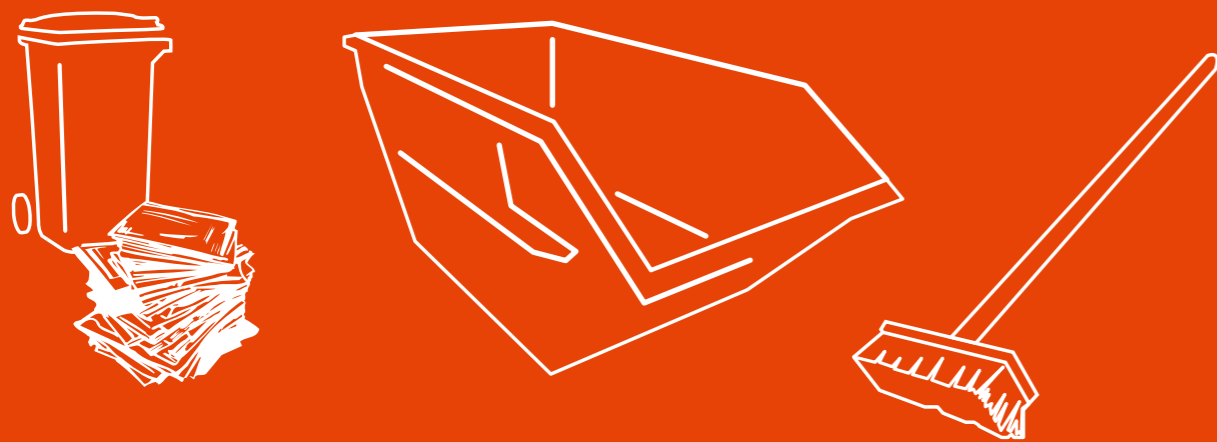
2024 GUIDEBOOK

FOR A CLEAN SCHWERIN



- PREVENTION • RECYCLING • DISPOSAL
- REFUSE COLLECTION CALENDAR
- STREET CLEANING
- WINTER ROAD MAINTENANCE





EINSATZBEREIT.

FÜR DICH. FÜR SCHWERIN.



SAS

Kundenservice

Schweriner Abfallentsorgungs- und Straßenreinigungsgesellschaft mbH
Ludwigsluster Chaussee 72 | 19061 Schwerin
Telefon: 0385 5770-0 | Telefax: 0385 5770-222
service@sas-schwerin.de

Öffnungszeiten:
Mo. bis Do.: 07.00 – 16.30 Uhr | Fr.: 07.00 – 15.00 Uhr



www.sas-schwerin.de



**Contact the City
Security service
Main Office**
(0385) 545 18 30
Fax:
(0385) 545 18 29
Email:
ordnungsdienst@schwerin.de

**Contact
SDS – Stadtwirtschaftliche
Dienstleistungen Schwerin
(Schwerin Municipal Services)
Main Office**
(0385) 633 16 71
Fax:
(0385) 633 16 77

**Waste collection /
organic waste bins**
(0385) 633 16 72
(0385) 633 16 76
(0385) 633 16 78
(0385) 633 16 80

Public relations
(0385) 633 16 70

Questions on bin fees
(0385) 633 16 76

Recycling systems
(0385) 633 16 71
Recycling centres
North: (0385) 48 07-80 47
South: (0385) 395 14 0

**Legal questions and questions
about fees** (0385) 633 16 71

**Commercial waste advisory
service**
(0385) 633 16 79

Problem and special waste
(0385) 633 16 70

**Street cleaning and illegal
waste disposal**
(0385) 633 16 75

Road maintenance
(0385) 644 35 33

Winter road maintenance hotline
(0385) 633 26 33

Email:
abfall@sds-schwerin.de

Website:
www.sds-schwerin.de



Dr Rico Badenschier

Mayor
of the state capital Schwerin

Dear readers,

Whenever our city is basking in its most beautiful postcard view in picture-book weather, when families stroll through the pedestrian zone, when a rainbow shimmers in the Pfaffenteich fountain, I take a deep breath and think: What a beautiful city!

The employees of our municipal enterprise SDS and the municipal waste disposal company SAS mbH know best what it means to keep it clean. We, the citizens of Schwerin, simply expect the pavements and streets to be clean, the winter road clearance service to work when there is snow and black ice, litter bins and rubbish bins to be emptied regularly and green spaces to be maintained.

Our help is both welcome and indispensable. Take waste separation, for example: those who consistently sort packaging into the yellow bags and bins help to reduce waste charges and recycle the raw materials contained in the waste. Anyone who uses the organic waste bin also feeds the SAS mbH organic waste recycling plant in the industrial park, which produces electricity as well as fresh compost.

To make it even easier to participate, this booklet provides you with valuable tips and information on collection and disposal options in the state capital, collection dates, information on winter services and bulky waste as well as the disposal of electronic waste and garden waste. Incidentally, it is even easier to keep an eye on the waste calendar if you download the corresponding app with reminder function onto your smartphone.

In Schwerin, there are many people who are not only happy about a clean city, but also lend a hand with the spring clean. The big clean-up traditionally takes place shortly before Easter - this year from 11 to 16 March 2024. I would already like to invite everyone who wants to help to the scrubbing party on 16 March at Bertha-Klingberg-Platz.

Do you have any questions or concerns about waste management, street cleaning or winter services? Then you can contact the employees of SDS and SAS mbH directly in the usual way. You will find the relevant telephone numbers opposite.

See you again - maybe even at the next spring clean!

Rico Badenschier

Yours sincerely, Lord Mayor
Rico Badenschier

Photo: Timm-Allrich

Topics

Contact Page 1

**Waste prevention and
recycling management**
Page 2

**Yellow bins –
Lightweight packaging
Dual Systems** Page 3

**Blue bins –
Waste paper
Waste paper** Page 4
Page 4

**Brown bins –
organic waste, garden waste**
Page 5

**Grey bins – non-
recyclable waste** Page 6

Bulky waste Page 6

**Fee notice
Schwerin.
Beautiful. Clean.** Page 7

**Problematic waste
Lithium-ion
batteries** Page 7
Page 7

Construction waste Page 8

Recycling centres Page 9
- Addresses
- Opening hours
- Phone numbers

Refuse collection calendar
- Collection days in detail
Page 10 - 15

Electronic waste Page 16

**belloo
Dog toilets** Page 17

Spring-clean Page 17

**Cleanliness in
green areas** Page 17

**Used clothes, furniture
exchange and
second-hand** Page 18

Street cleaning Page 19

Winter road maintenance
- by SDS
- Residents' obligations
Page 20-21

**Winter road maintenance
map** Page 22-25

Overview
- What is disposed of pro-
perly and how? Page 26

Waste separation Page 27
Waste recycling Page 28



Product responsibility

The European legislature is, as part of so-called "product responsibility", increasingly obliging manufacturers to design products in such a way that the waste generated as a result of their production and use is reduced. The keywords here are: durability, reparability, use of recyclable materials. These properties are part of the so-called eco-design. The Blue Angel label offers initial guidance here.



GRÜNER KNOPF

SOZIAL ÖKOLOGISCH STAATLICH UNABHÄNGIG ZERTIFIZIERT

Green Button eco label

The Green Button state textile label was started in September 2019 by the Federal Ministry for Development. The aim is to protect people and the environment in the supply chain – from fibre to hanger. If you find this seal on an item, you can be sure that you are buying socially and ecologically produced textiles.

Packaging waste to decrease!

From 2023, food and drink providers in the "to-go" sector must also provide reusable packaging that must not be more expensive than disposable options. Small outlets such as snack shops and kiosks are exempt from this obligation, but customers will need to fill containers they have brought with them.

Please note:

Waste avoidance saves on raw materials and energy, protects the environment and reduces costs and charges for you.

Waste prevention and recycling management



Photo: www.pixabay.de

Waste is both a product and reflection of our affluent society. Nearly everything that surrounds us – be that furniture, vehicles, consumer goods or food – will become waste once it stops being used. Our planet's resources are limited. Prosperity with less consumption of resources and less waste is not only conceivable, it is also the order of the day.

As waste is always generated from former raw materials and products, waste prevention and recycling management with the use of recycled materials make an important contribution of the preservation of our planet's resources.

In the following sections on waste separation, recycling and second hand offers, you'll learn how you as a consumer can

strengthen the reuse and recycling of a product in its life cycle from raw material to waste.

Of course, the best waste is waste which isn't generated in the first place! That's why we want to take this opportunity to give you tips on how to avoid waste.

- Avoid elaborate product packaging, gift packaging or single-portion packaging: use reusable containers instead of single-use containers.
- If possible, buy unpackaged food.
- Don't use disposable products: when purchasing products like electrical appliances, pieces of furniture or toys make sure they're durable or easy to repair.

- Choose environmentally-friendly products: choose recycled products made from waste paper or other waste materials.
- Use reusable packaging for things like detergents or spices.
- When buying, check for recyclable materials like glass or paper, wood and metal.
- Avoid batteries: use products with solar cells, rechargeable batteries or power supplies.

Waste separation pays off!

In a city with more than 96,000 residents, a large amount of waste is generated. Whether it's residual waste, lightweight packaging, waste glass, paper, bulky waste or biowaste, organising the removal of it all is a logistical feat.

Around 16,500 residual waste bins are currently emptied on a regular basis. But if you separate your waste correctly, you can reduce your household waste charges by verifiably reducing the amount of residual waste. For household waste separation, the organic waste bin, the blue bin for waste paper and the yellow sack disposal or yellow bin are available free of charge.

and the yellow bin. You can also bring your separated recyclables to 151 collection points in Schwerin.

Here you will also find containers for used glass and used clothing. You can find the exact locations at sds-schwerin.de.



Yellow bins for packaging

Reducing the amount of waste and recovering recyclable materials are important contributions to the protection of the environment and conservation of the earth's resources. All sales packaging (lightweight packaging) is recorded here.

Lightweight packaging and yellow sacks
You can dispose of your lightweight packaging in yellow sacks/yellow bins and in the corresponding recyclable material collection containers.

What is lightweight packaging?

Packaging such as food cans, beverage cans, metal closures, aluminium trays, aluminium lids, aluminium foil, carrier bags, bags, wrapping film, bottles, cups, other plastic packaging, beverage and milk cartons, vacuum packaging made of composite materials, rinsing is not necessary.

What does not belong in the yellow sacks or in the yellow bins?

Glass, paper, cardboard packaging, any packaging with residual contents containing pollutants, Electrical goods, batteries and residual waste.

What do yellow sacks/bins cost?

Yellow sacks and yellow bins are available for free provided that household quantities are tendered.

Where can yellow bins be ordered?

Via a written order from the property owner to SDS, Eckdrift 43 - 45, 19061 Schwerin

Where are yellow sacks available from?

- SAS mbH, Ludwigsluster Chaussee 72
- Citizen's Office, Am Packhof 2 - 6, Town Hall
- Public utility company's customer centre, Mecklenburgstraße 1 and Eckdrift 43 - 45
- Recycling centres, see page 9 for addresses

When are the yellow sacks/yellow bins collected?

The yellow sacks/yellow bins must be ready for collection by 7:00 am at the latest on collection day. You can find the collection days for your street on the waste collection calendar from page 10 onwards. Bags of recyclable materials must be tied up and left in a clearly-visible place.

In the city centre, recyclable materials are collected via recycling containers or yellow bins.

Please note: yellow sacks which have been filled incorrectly will be left behind!

Pick out items like pieces of plastic or residual waste and put outside again on the next collection day.



Recycling

The plastic content is extracted from the lightweight packaging collected in the Yellow Bag and Yellow Bin and then processed into a recyclate for reuse as plastic.

This plastic-based granulate serves as a source material for plastic products in the construction industry, traffic engineering, logistics and packaging technology and replaces the production of new plastics from primary materials like petroleum and coal.

PET plastic is primarily used for food packaging, particularly bottles, as well as foil or even textile fibres. PET recycling has achieved a high level of economic efficiency.

PET is sorted out of the waste using laser spectroscopy and processed under recycling code 01 for textile fibres, foil, thermoformed products and new bottles and containers.

The resulting expenses are to be borne by the municipalities and are refinanced by them by charging fees. Packaging disposed of in the residual waste therefore increases the costs of residual waste logistics and thus costs on the part of the municipality, although the system of the Packaging Act assigns these waste management services to the balance sheet of a licence fee.

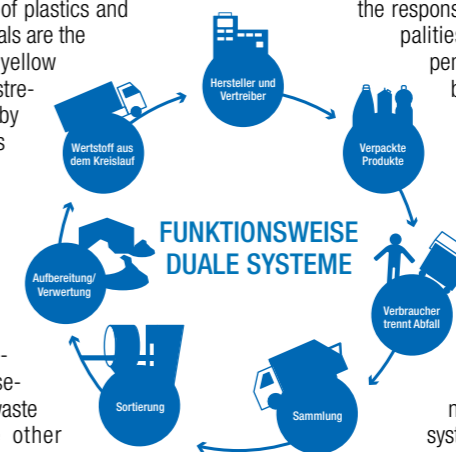
A brief introduction to Dual Systems Germany:

The Packaging Ordinance issued in 1991 obliged the economy for the first time to take back packaging put into circulation after use and recycle it. Until then, the municipalities were exclusively responsible for waste disposal. Companies operating in the food and packaging industry in Germany therefore founded an association that bundled the recycling obligations and organised joint disposal. The first private-sector provider of this service was Der Grüne Punkt - Duales System Deutschland GmbH.

Since 2009, the unique position of the „Green Dot“ system has given way to a number of equal systems. Every manufacturer, distributor and online retailer is legally obliged to participate in one of the 10 dual systems by paying a licence fee. As consumers, we finance this licence fee by paying a surcharge on the packaged goods. The packaging then

typically ends up in the private end consumer's waste. The collection container for all packaging made of plastics and composite materials are the yellow sacks or yellow bins. This waste stream is managed by the dual systems from collection and transport through to recycling, and therefore flows logistically and financially completely separate from the waste logistics of the other waste fractions, which are the responsibility of the local authorities. The disposal and recycling of waste

fractions from private households beyond the responsibility of the municipalities. The resulting expenses are to be borne by the municipalities and are refinanced by them by charging fees. Packaging disposed of in the residual waste therefore increases the costs of residual waste logistics and thus costs on the part of the municipality, although the system of the Packaging Act assigns these waste management services to the balance sheet of a licence fee.



More information here:



www.muelltrennung-wirkt.de

Put all plastic and composite packaging in the yellow bag or yellow bin.

As of the status of 2021 are according to Packaging Act (VerpackG) the following Dual Systems are recognised:

- Der Grüne Punkt – Duales System Deutschland GmbH
- BellandVision GmbH
- EKO-Punkt GmbH & Co. KG
- Interseroh+ GmbH
- Landbell AG
- Noventiz Dual GmbH (Reconomy Group)
- PreZero Dual GmbH, Teil der Schwarz-Gruppe (Lidl, Kaufland)
- Reclay Holding GmbH
- Recycling Dual GmbH
- Zentek GmbH & Co. KG





Tips for recycling

- Shred or fold up big or bulky boxes before disposal.
- Buy and use recycled paper. Recycling paper saves water, energy and raw materials, and closes the materials cycle.
- Collecting and recycling waste glass is good. Using reusable bottles is better!
- Separate the metal and plastic closures from bottles and glass; they belong in the yellow sacks.



Blue bins for paper

There are currently two systems for collecting waste paper from households in the city: in the collection system, waste paper is collected close to your home in blue bins, which can be ordered in three sizes (120, 240 or 1,100 litres). Under the bring system, there are three cubic metre collection containers at selected recycling centres. Use the paper bins close to your home – they are convenient and free to use.

What counts as waste paper?

Newspapers, magazines, folded boxes, cardboard and other printed products

What does not count as waste paper?

Very dirty household paper (residual waste), greaseproof paper, wax paper and serviettes (residual waste), wallpaper (residual waste), tissue paper, tissues, nappies

(residual waste), photos and carbon paper (residual waste), paper heavily coated with plastic or metal (residual waste or recyclable materials), drinks and milk cartons (yellow sack), label backing paper (residual waste), film-coated paper and cardboard boxes (residual waste)

Please don't!



Where are blue bins available from?

Via a written order from the property owner to SDS Eckdrift 43 - 45, 19061 Schwerin

How often are the blue bins emptied?

They are emptied every four weeks. Blue bins must be ready for collection by 7:00 am on collection day. You can find the collection days for your street on the waste disposal calendar from page 10 onwards. The cubic metre collection containers are emptied at least once a week.

How much do blue bins cost?

No additional fee is charged for blue bins.

Please note:

Waste paper may not be contaminated. Bins which have not been correctly filled will not be emptied. Cardboard and waste paper next to the paper bin will not be taken away.

What else should be considered?

To avoid noise pollution, the glass containers may only be used Monday to Saturday between the hours of 7:00 am and 7:00 pm. Please be considerate of local residents. No glass may be thrown in on Sundays or holidays or at night.

What does not belong in the glass container?

Window panes and other flat glass (construction waste), mirrors (residual waste), light-bulbs (residual waste), porcelain (residual waste), stoneware (residual waste), fluorescent tubes (problematic waste).

When are the glass containers emptied?

Waste glass containers are emptied every 14 days. This can be changed to weekly emptying, as required. If the container is frequently full, please let us know: Tel. (0385) 633 16 70



Brown bins for organic waste

Brown bins are used for collecting organic waste, which is then processed in a fermentation plant.

Schwerin is the first commune in Mecklenburg-Vorpommern to run a combined composting and organic waste fermentation facility.

What goes in the brown bins?

- Fruit and vegetable waste
- Coffee grounds and used teabags
- Spoiled food, eggshells
- Cut flowers and potted plants
- Green cuttings from trees, bushes and grass

- normal household quantities of cooked leftovers, meat, bones
- Small amounts of feathers, hair, hay and straw, as well as wood and sawdust

What doesn't go in the brown bins?

- Inorganic waste like plastic bags
- Litter for small animals, clumping litter
- Tree cuttings (heavy wood) and mortar
- Compostable plastic bags for organic waste

Where are brown bins available from?

Property owners can order one in writing from SDS, Eckdrift 43 - 45, 19061 Schwerin provided that at least one residual waste bin is available.

How often are the brown bins emptied?

They are emptied every two weeks. Brown bins must be ready for collection by 7:00 am on collection day. They are emptied weekly in large residential complexes. You can find the collection days for your street on the waste disposal calendar from page 10 onwards.

How much do brown bins cost?

No additional fee is charged for brown bins.

In what sizes are the organic waste bins available?

Brown bins can be ordered in sizes of 120 or 240 litres.

Facts about green cuttings and organic waste sacks

What disposal options are there?

- Composting in your own garden,
- Taking it to a recycling centre,
- Using organic waste sacks. You can use up to 5 sacks – or up to 10 sacks from September to November – in addition to your organic waste bin.

What are organic waste sacks, and where can I get them from?

These 100-litre capacity paper sacks with "Only for leaves and garden waste" printed on them are available from recycling centres,

the SAS, the citizens' centre in the Town Hall and the public utility company's customer centre.

What can go in the organic waste sacks?

Only green cuttings, leaves and parts of plants. Please only fill with a maximum of 20 kilograms so that the sacks can still be transported.

What compostable waste do recycling centres accept? Green cuttings, hedge trimmings, shrubbery, leaves and grass cuttings.

What do organic waste sacks cost?

1.00 Euro per piece.

How much does delivery cost?

No additional fees are charged for the use of organic waste sacks. The delivery of loose green cuttings/organic waste costs EUR 3.00 per cubic metre.

A fee of EUR 0.30 per sack (each with a volume of 100 litres) will be charged for the delivery of other sacks (e.g. blue sacks).



Organic waste from allotments

Garden waste, leaves, hedge trimmings and similar compostable materials in allotments may only be disposed of in organic waste sacks if they are taken to recycling centres. Leaving the sacks at recycling collection points or in someone else's organic waste bin is considered illegal waste disposal and will result in a fine. Allotment associations which are not yet connected with the public waste disposal system must use commercial facilities.



Do not burn green cuttings

Burning cuttings from trees and bushes is prohibited in Schwerin as there are enough alternatives for getting rid of your green cuttings and organic waste throughout the city.

Dry, untreated pieces of wood and cuttings from trees and bushes may only be burned as part of an Easter bonfire from Maundy Thursday until Easter Monday. If you wish to light an Easter bonfire please file a request at: Event management, Am Packhof 2-6, 19053 Schwerin.



Avoid odours and fruit flies

Organic waste bins start to smell quite quickly when it's warm. Your collection container should be emptied and cleaned out regularly. It is not possible to replace the organic waste bin due to soiling or odour. You can combat unpleasant smells by scattering stone meal – available from hardware stores – over your organic waste. This will also keep fruit flies away.

Convenient place for your brown bin

Of course, it helps if you put your organic waste bin in a shaded, protected place. If no such place is available, you can build an enclosure, optionally with greenery, to provide shade and a nice view.

Tips to combat fluids in your organic waste bin

To prevent excessive fluid collecting at the bottom of your organic waste bin, cover it with newspaper. The newspaper absorbs the moisture. If damp organic waste gets into your brown bin and there's a frost over winter, this may result in the frozen waste sticking to the bottom or sides, meaning that it cannot be completely emptied. It helps to wrap kitchen waste in newspaper.

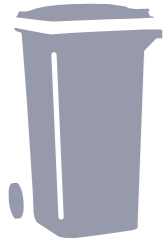
Please note:

Do not leave waste glass, paper/boxes or residual waste next to the collection point.

Please note:

No plastic in the organic waste bin! Do not use plastic bags labelled as compostable!

Every user is responsible for cleaning their own organic waste bin.



Grey bins for residual waste

The grey residual waste bins are there for all the rest of the waste which can no longer be salvaged due to contamination or mixing.

What counts as residual waste?

From folders to cigarette butts, we have compiled a clear table for you on page 24 which should help you with sorting. You'll find more information in our ABC of Waste on our website.

How much do grey bins cost?

The statute of household waste fees regulates the fee for grey residual waste bins.

Who can order or change orders for residual waste bins?

This can be done by the property owner or by a representative with the appropriate authorisation.

What size and how many grey bins do I need?

Each property should have at least one residual waste bin available. It must not be overflowing (it must be possible to close the lid). Waste must not be left next to the grey bins. A minimum residual waste container capacity of ten litres per resident and week must be available for residential properties.

What sizes/volumes are there?

Grey bins with capacities of 40, 80, 120, 240, 1,100 and 5,000 litres are in use in Schwerin.

What needs to be considered when setting up the bins?

Grey bins must always be set up on your own property.

What needs to be considered when it comes to emptying the bins?

Grey bins must be ready for collection by 7:00 am on collection day. You can find the collection days for your street on the waste disposal calendar from page 10 onwards.

Do you have any questions about the specific amount of your fee?

Give us a call on Tel. (0385) 633 16 76 or 72, 78 and 80



Please note:

Only residual waste sacks with a specific SAS label will be collected – and not other blue sacks.

SAS residual waste sacks
When you temporarily produce large volumes of waste, e.g. on holidays or when moving house, you can use the SAS residual waste sacks.

There is a fee of 3.29 Euros per sack.

You can get these residual waste sacks from the SAS customer service team: Ludwigsluster Chaussee 72 19061 Schwerin or in the Stadthaus

Tie up the sacks and leave them for collection next to the grey residual waste bins on the corresponding collection day for residual waste.

You'll find all the collection days at a glance, a reminder function and more on our waste collection calendar app:



Click here to register for bulky waste disposal on the SAS website.



Bulky waste disposal

What is bulky waste?

Bulky waste is made up of household items, which will not go in the residual waste bins due to their size or material quality. That means things like furniture, floor coverings, etc. It also includes electronic waste, fridges, freezers and boilers.

What does not count as bulky waste?

Used tires, wallpaper, materials from construction and renovation works, windows, doors, bathroom accessories, problematic waste. (see the table on p. 24)

What options are there for bulky waste disposal?

- Free annual collection by the SAS.
- Taking it to a recycling centre (please enquire about specific prices with the recycling centres directly, see page 9).

How much bulky waste is collected and how much does it cost?

Each household can dispose of up to 5 m³ of bulky waste for free per calendar year.



What should be considered when ordering?

You can register for bulky waste disposal through the bulky waste card, by fax or online with the order form at www.sas-schwerin.de. The processing time lasts about 4 weeks.

Important: the SAS confirms collection days.

What happens if I have more bulky waste?

Any additional amounts are to be arranged with the SAS and subject to a fee.



Waste collection fees – includes numerous services

The waste collection fees cover more than you would assume at first glance. The following services are included:

- Residual waste disposal
- Bulky waste disposal once a year
- Waste paper disposal
- Organic waste bin collection
- Operation of recycling centres
- Operation of mobile hazardous waste units
- Acceptance of green cuttings

The waste collection fee is made up of a basic fee and a service charge:

Basic fee: calculated according to the number of usage units.

This means residences, shops, workshops and business premises.

Service charge: this is derived from the number of containers and how often they are emptied. The amount charged is regulated in the statute on household waste fees.

Do you have any more questions on this topic? Give us a call on ☎ (0385) 633 16 72 or 78.



17,000 fee notices

Every year, around 17,000 fee notices for waste disposal and street cleaning are sent out at the end of January, and the trend is rising. On the front you will find the final statement for the previous year, i.e.

what has already been paid and whether there are any back payments, e.g. for example due to a change to a larger residual waste bin. The reverse side shows the fees and the dates for the advance payments in the new year.

If the SDS does not have a direct debit authorisation, you will still receive a form for issuing a direct debit with the fee notice. This means that payment deadlines can no longer be missed. It is important to note that the direct debit authorisation must be signed by hand.

If, when reading your fee notice, you realise that your customer data is no longer up to date, please inform us in writing, including any changes in ownership. Please use our e-mail address abfall@sds-schwerin.de.

Schwerin. Beautiful. Clean.

In our beautiful state capital, there are around 1000 litter bins along pavements and on green spaces. Schwerin's public transport system equips 210 bus stops with litter bins.

There are also other waste disposal options provided by housing associations, clubs and tradespeople. For some years now, twelve „Mr Fill“ containers have been supporting locations with a lot of public traffic. The rubbish is compacted in these containers and can hold around 120 litres of waste. In comparison, a standard waste bin can only hold around 40 litres of waste.

Unfortunately, experience has shown that more litter bins do not contribute to greater cleanliness. Again and again it has been observed that pizza boxes or rubbish bags have been placed next to an empty litter bin.

So what to do?

Sometimes we ask ourselves what has happened to the good old custom of taking rubbish home and disposing of it there? We don't know, but we would like to see this habit revived. It would be even more helpful if we didn't generate waste in the first place and made a conscious effort to use reusable packaging or unpackaged goods.

The more people who take part, the better.

And finally - cigarette butts belong in the rubbish.

Cigarette butts, an issue that is close to our hearts and those of many Schwerin residents. It is not about smoking per se. The remains of tobacco lying around are a lasting nuisance. Many smokers stub out their cigarettes on the roof of the litter bin and leave them

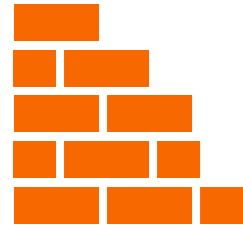
there. However, the wind disperses the cigarette butts deposited on the roof of the litter bin in the neighbourhood. This pollutes the sweepings and if the stubs end up in the environment, they jeopardise the soil and water reserves.

We therefore expressly ask you to remove the embers and throw the butts in the rubbish bin. Ashtrays have been installed on many litter bins. The number is gradually being increased.

With the help of an AI system, the street cleaning vehicle can digitally record the type and volume of street rubbish. After analysing the data, litter bins with ashtrays can then be placed in the right place. Another step towards greater cleanliness in Schwerin, the capital of life.

Please don't!





Construction waste recycling

Mineral waste such as bricks, concrete, plaster can be used as substitute materials in street and road construction.

Glass and metal are melted down into recycled construction materials.

Waste that cannot be recycled is utilised thermally as a substitute fuel.

Of the construction and demolition waste generated in 2018, 199.8 million tonnes of material were recycled and 73.3 million tonnes were recovered as recycled building materials. This quantity corresponds to 12.5% of the construction industry's requirements for building construction, civil engineering and road construction.

Current research is dealing with improving the recycling of mineral construction waste in such a way that primary raw materials like gravel and sand are replaced by recycled construction materials.



Separate collection of construction waste

Construction waste makes up the majority of all waste. In 2018, 418.2 million tonnes of waste were generated in Germany, of which 228.1 million tonnes were construction and demolition waste.

The legal requirements for separate collection also apply to construction waste. If the quantity exceeds 10 m³, construction waste shall be collected separately insofar as this is technically possible and economically reasonable. Larger construction measures of house builders are also affected by this. When planning a construction site, it is im-

portant to consider what fraction of construction waste should be collected in a separate container and the extent to which so-called mixed construction waste is generated.

With clever planning you can save money because disposing of mixed building waste is nearly twice as expensive as disposing of things like wood, foils or sheet glass separately.

The following things are to be collected separately:

- Glass (170202)
- Plastic (170203)
- Metals (170401 to 170407 and 170411)
- Wood (170201)
- Insulation material (170604)
- Bituminous mixtures (170302)
- Construction materials on a plaster base (170802)
- Concrete (170101), • Brick (170102)
- Tiles and pottery (1700103)

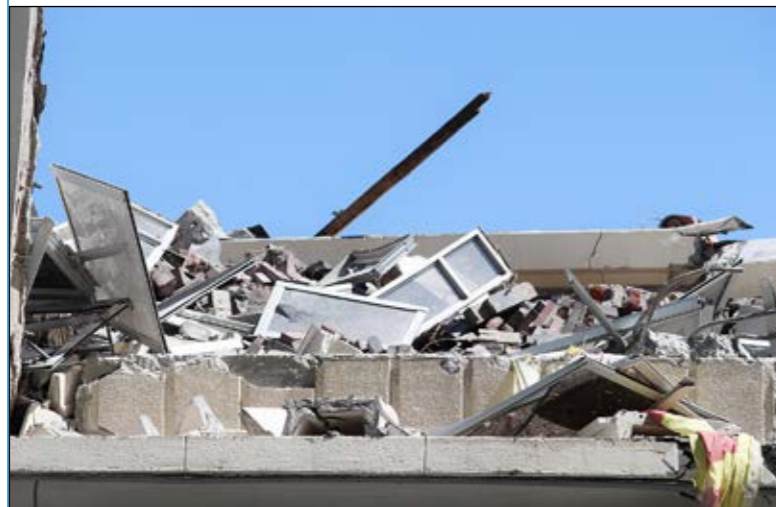
Disposing of construction waste

The disposal of any waste accrued as part of construction work is not a mandatory municipal waste disposal task. The developer will need to hire a company certified for the disposal of construction waste for this.

What is construction waste?

- Broken-off bits of concrete and masonry,
- Roof tiles, concrete roofing tiles, grout,
- Stove tiles, floor/wall tiles,
- Insulation materials, glass wool,
- Roofing felt, corrugated asbestos boards and flat asbestos boards,

- Treated woods, windows and door frames,
- Large amounts of carpet, PVC, floor coverings and floor boards,
- Foil and cardboard heavily contaminated with foreign matter, etc.



Caution:

Construction waste classified as hazardous – asbestos boards, sealants containing PCB and roofing felt for example – is subject to the Ordinance on Waste Recovery and Disposal Records and, as a result, can only be transported and disposed of by certified specialist waste disposal companies.

Please note:

Construction waste does not belong in the grey bin! Hire a certified waste disposal company.



The Blue Angel for building products, such as: floor coverings, sealants, low-emission materials for indoor use, external wall insulation systems, varnish and paints

Recycling centres in Schwerin

Alba Nord GmbH and SAS Schweriner Abfallentsorgungs- und Straßenreinigungsgesellschaft mbH are competent and reliable partners of the state capital Schwerin.

It is free for private households to use recycling centres in the city of Schwerin. Traders in the city and private households in the districts can use the service for a fee. Photovoltaic elements can be delivered to the Recycling centre north (Ziegeleiweg 12, 19057 Schwerin).

Costs:
The disposal of used batteries, electrical appliances, hazardous waste and scrap is free.

Find out the price of disposing of bulky waste, household waste, green cuttings, etc. from the recycling centres.

On behalf of the state capital Schwerin



Operator: ALBA Nord GmbH

Ziegeleiweg 12
19057 Schwerin

Tel.:
(0385) 48 11 0

Fax:
(0385) 48 43 098



Recycling centre north

Lankow: Ziegeleiweg 12, 19057 Schwerin

Tel.:
(0385) 48 07 80 47

Opening hours:
Mon. to Fri. 9:00 am - 7:00 pm, Sat. 8:00 am - 1:00 pm

Operator: SAS mbH

Ludwigsluster Chaussee 72
19061 Schwerin

Tel.:
(0385) 57 70 0

Fax:
(0385) 57 70 222



Recycling centre south

Ludwigsluster Chaussee 72

Tel.:
(0385) 57 70 250

Opening hours:
Mon. to Fri. 9:00 am - 7:00 pm, Sat. 8:00 am - 1:00 pm

Scope of service:

Accepting:

- Bulky waste
- Green cuttings
- Electrical appliances
- Scrap metal
- Waste paper
- Waste glass
- Lightweight packaging
- Plastic waste
- Old batteries
- Empty ink/toner cartridges
- Old clothes
- CDs/DVDs/floppy disks
- Problematic waste from households
- Household waste (only in SAS sacks)

Issuing:

- Organic waste sacks
- Yellow sacks



Please note:

Find more information on this topic online at www.sds-schwerin.de

Table with 4 columns: District/Main collection day(s), Type of waste/recycling, Collection cycle, Collection days. Rows include districts like ALTSTADT I, ALTSTADT II, FELDSTADT I, FELDSTADT II, FRIEDRICHSTHAL I, FRIEDRICHSTHAL II, GÖHRENER TANNEN, GÖRRIES I, GÖRRIES II, GROßER DREESCH, GARTENSTADT I, GARTENSTADT II, KREBSFÖRDEN I, KREBSFÖRDEN II.

Table with 4 columns: District/Main collection day(s), Type of waste/recycling, Collection cycle, Collection days. Rows include districts like LANKOW I, LANKOW II, LANKOW III, LANKOW IV, LEWENBERG I, LEWENBERG II, MEDEWEGE, MUEB, MUEBER HOLZ, NEU ZIPPENDORF, NEUMÜHLE I, NEUMÜHLE II, NEUMÜHLE III, OSTORF, PAULSSTADT I.

Table with 4 columns: District/Main collection day(s), Type of waste/recycling, Collection cycle, Collection days. Rows include districts like PAULSSTADT II, PAULSSTADT III, PAULSSTADT IV, SACKTANNEN, SCHELFSTADT I, SCHELFSTADT II, WARNITZ, WERDERVORSTADT I.

Table with 4 columns: District/Main collection day(s), Type of waste/recycling, Collection cycle, Collection days. Rows include districts like WERDERVORSTADT II, WESTSTADT I, WESTSTADT II, WESTSTADT III, WICKENDORF, WÜSTMARK I, WÜSTMARK II, ZIPPENDORF.

Public holiday waste disposal 2024

You can also use the online waste collection calendar or our Abfallkalender (refuse collection calendar) app. It is possible to receive a reminder for all the dates. The calendar can be printed out.

Subject to changes

Table with 12 columns: Public holiday, Weekday, Date, Waste disposal day for the public holiday (Weekday, Date), Subsequent delay of regular waste collection days (Weekday, DDate, Weekday, Date, Weekday, Date, Weekday, Date).

You can find more information on the SDS website at www.sds-schwerin.de and on the SAS website at www.sas-schwerin.de

Kranweg	Werdervorstadt I
Krebsbachring	Krebsförden II
Krebsförden Tannen	Krebsförden II
Krebsförden Weg	Görries II
Krösnitz	Ostorf
Krugwiese	Ostorf
Küchengartenweg	Ostorf
Kuckuckstr.	Neumühle II
Kühls Acker	Krebsförden
Kurze Badlow	Görries II
Kurze Str.	Gartenstadt I
L Lagerstr.	Werdervorstadt I
Landesrabbiner-Holdheim-Str.	Altstadt I
Landreiterstr.	Schelfstadt II
Lange Badlow	Görries II
Lange Reihe	Neumühle II
Langer Berg	Gartenstadt II
Lankower Hege	Lankow III
Lankower Str.	Lankow I
Lärchenallee	Friedrichsthal I
Lärchenweg	Friedrichsthal I
Lehmstr.	Schelfstadt II
Leibnizstr.	Mueßer Holz
Lennéstr. 1	Altstadt II
Lennéstr. 1A-5	Ostorf
Leonhard-Frank-Str.	Weststadt I
Lerchenstr.	Neumühle II
Lessingstr.	Weststadt I
Lilienring	Gartenstadt II
Lilienthalstr.	
11-51 (odd numbers only)	Görries II
53-105 (odd numbers only)	Neumühle I
2-50A (even numbers only)	Görries II
50B-60 (even numbers only)	Neumühle I
Lindenstr.	Schelfstadt II
Lindhorst	Wüstmark I
Lischstr.	Ostorf
Lise-Meitner-Str.	Mueßer Holz
Lobedanzgang	Altstadt II
Lomonossowstr. 1-9	Mueßer Holz
Lomonossowstr. 15	Mueß
Lortzingstr.	Paulsstadt II
Löwenplatz	Weststadt II
Löwenthalstraße	Werdervorstadt I
Lübecker Str.	
3-29 (odd numbers only)	Altstadt I
31-119 (odd numbers only)	Paulsstadt III
121-263 (odd numbers only)	Weststadt III
265-289 (odd numbers only)	Lankow I
4-44 (even numbers only)	Altstadt I
46-132 (even numbers only)	Paulsstadt III
134-266 (even numbers only)	Weststadt III
268-278 (even numbers only)	Lankow I
Lübstorfer Weg	Wickendorf
Lucie-Höflich-Str.	Werdervorstadt I
Ludwig-Bölkow-Str.	Göhrener Tannen
Ludwigsluster Chaussee	
1-31 (odd numbers only)	Großer Dreesch
33-57 (odd numbers only)	Göhrener Tannen

2-72 (even numbers only)	Gartenstadt I
Lutherstr.	Ostorf
Lützower Ring	Friedrichsthal I
Lützower Ring 44, 46 and up	Friedrichsthal II
M Magdeburger Str.	Neu Zippendorf
Marie-Curie-Str.	Mueßer Holz
Marie-Hankel-Str.	Werdervorstadt I
Marienplatz	Altstadt I
Martinstr.	Altstadt I
Max-Planck-Str.	Mueßer Holz
Max-Reichpietsch-Str.	Großer Dreesch
Max-Suhrbier-Str.	Weststadt II
Mecklenburgstr.	
1-81 (odd numbers only)	Altstadt I
83-115 (odd numbers only)	Feldstadt I
2-64 (even numbers only)	Altstadt I
66-68 (even numbers only)	Feldstadt I
Medeweger Str.	Lankow II
Meisenweg	Neumühle I
Mendelejewstr.	Mueßer Holz
Meta-Sander-Str.	Werdervorstadt I
Mettenheimerstr.	Gartenstadt I
Michael-Faraday-Str.	Mueßer Holz
Mittelfeld	Gartenstadt II
Mittelstelle	Görries I
Mittelweg	Weststadt III
Molkereistr.	Paulsstadt III
Möllner Str.	Lankow II
Moorbrinker Weg	Friedrichsthal I
Moritz-Wiggers-Str.	Paulsstadt III
Möwenburgstr.	
1-27 (odd numbers only)	Werdervorstadt I
33-67 (odd numbers only)	Lewenberg I
2-72 (even numbers only)	Werdervorstadt I
Mozartstr.	Paulsstadt I
Mueß Ausbau	Mueß
Mueßer Bucht	Mueß
Mühlenscharm	Neumühle III
Mühlenstr.	Schelfstadt I
Mühlentwiete	Weststadt I
Müllerstr.	Paulsstadt II
Münzstr.	Schelfstadt II
N Nachtigallenstr.	Neumühle I
Nedderfeld	Mueß
Neu Pampow	Wüstmark II
Neu Zippendorf	Neu Zippendorf
Neubrandenburger Str.	Neu Zippendorf
Neue Gartenstadt	Gartenstadt I
Neumühler Str.	Neumühle I
Neumühler Weg	Lankow I
Newtonstr.	Mueßer Holz
Niels-Bohr-Str.	Mueßer Holz
Niels-Stensen-Str.	Mueßer Holz
Nienmarker Weg	Friedrichsthal I
Nikolaus-Otto-Str.	Wüstmark II
O Oberer Kamp	Warnitz
Obotritening	
17-19A (odd numbers only)	Weststadt III
49-249 (odd numbers only)	Weststadt II

40-64 (even numbers only)	Paulsstadt IV
74-132 (even numbers only)	Paulsstadt I
134-170 (even numbers only)	Paulsstadt II
Osterberg	Ostorf
Ostorf Ufer	Feldstadt II
Otto-Hahn-Str.	Wüstmark II
Otto-von-Guericke-Str.	Mueßer Holz
Otto-Weltzien-Str.	Görries II
Pabsberg	Warnitz
Pampower Str. 1-9	Krebsförden II
Pampower Str. 50-76	Wüstmark II
Pankower Str.	Neu Zippendorf
Pappelgrund	Lewenberg II
Parchimer Str.	Neu Zippendorf
Parkweg	Ostorf
Pasewalker Str.	Lankow I
Paulsdamm	Wickendorf
Paulsdammer Weg	Wickendorf
Paulshöher Ring	Ostorf
Paulshöher Weg	Ostorf
Pawlowstr.	Mueßer Holz
Pecser Str.	Neu Zippendorf
Perleberger Str.	Neu Zippendorf
Pestalozzistr.	Paulsstadt IV
Pfaffenstr.	Schelfstadt I
Pilaer Str.	Neu Zippendorf
Pingelshäger Str.	Friedrichsthal I
Pirolweg	Neumühle III
Plater Str.	Neu Zippendorf
Platz der Freiheit 1-5	Paulsstadt III
Platz der Freiheit 6-20	Paulsstadt I
Platz der Jugend	
1-25 (odd numbers only)	Feldstadt II
4-10 (even numbers only)	Feldstadt II
12-14 (even numbers only)	Ostorf
Plöner Str.	Lankow II
Postweg	Wickendorf
Potsdamer Str.	Neu Zippendorf
Prerower Ring	Lankow I
Puschkinstr.	
1-45 (odd numbers only)	Schelfstadt II
47-81 (odd numbers only)	Altstadt I
2-30 (even numbers only)	Schelfstadt II
32-64 (even numbers only)	Altstadt I
Querstr.	Feldstadt I
Rahlstedter Str.	Lankow II
Räthenweg	Zippendorf
Ratsteich	Weststadt II
Ratzeburger Str.	Lankow I
Rebhuhnweg	Neumühle III
Reiferbahn	Altstadt II
Reihe 1	Lankow I
Reihe 2	Lankow I
Reutzstr.	Paulsstadt III
Ricarda-Huch-Str.	Werdervorstadt I
Richard-Wagner-Str.	Weststadt I
Ritterstr.	Altstadt I
Robert-Beltz-Str.	Weststadt III
Robert-Blum-Str.	Lewenberg II

Robert-Bunsen-Str.	Wüstmark II
Robert-Havemann-Str.	Großer Dreesch
Robert-Koch-Str.	Werdervorstadt II
Robert-Stock-Str.	Wüstmark II
Rogahner Str.	Görries I
Röntgenstr.	Schelfstadt I
Rosa-Luxemburg-Str.	Paulsstadt IV
Rosenstr.	Gartenstadt I
Rostocker Str.	Neu Zippendorf
Rudolf-Breitscheid-Str.	Paulsstadt I
Rudolf-Diesel-Str.	Wüstmark II
Rudolf-Tarnow-Str.	Krebsförden II
Rugenseer Weg	Friedrichsthal I
S Sacktannen	Sacktannen
Salzstr.	Altstadt I
Sandstr.	Paulsstadt II
Schäferstr.	Feldstadt I
Schall-und-Schwencke-Weg	Werdervorstadt I
Schelfmarkt	Schelfstadt II
Schelfstr.	Schelfstadt II
Schillerstr.	Weststadt I
Schlachterstr.	Altstadt I
Schlehenstr.	Friedrichsthal I
Schleifmühlenweg	Ostorf
Schleswiger Str.	Lankow II
Schliemannstr.	Schelfstadt II
Schloßgartenallee	Ostorf
Schloßstr.	Altstadt II
Schmiedeberg	Wickendorf
Schmiedestr.	Altstadt I
Schnitterwiese	Medewege
Schönfelder Weg	Friedrichsthal II
Schulstr.	Schelfstadt I
Schulzenweg	Görries I
Schusterstr.	Altstadt II
Schwalbenstr.	Neumühle II
Schwälkenberg	Werdervorstadt II
Schwaneninsel	Werdervorstadt II
Schweinemarkt	Schelfstadt I
Schweriner Str.	Wüstmark I
Sebastian-Bach-Str.	Weststadt I
Seeblick	Werdervorstadt II
Seehofer Str.	Wickendorf
Seelust	Wickendorf
Seestr.	Feldstadt I
Seitenweg	Medewege
Semmelweisstr.	Werdervorstadt II
Severinstr.	
1-25 (odd numbers only)	Paulsstadt IV
27-31 (odd numbers only)	Paulsstadt I
2-28 (even numbers only)	Paulsstadt IV
30-36 (even numbers only)	Paulsstadt I
Siedlerweg	Lewenberg II
Siedlung	Lankow II
Siegfried-Marcus-Str.	Wüstmark II
Siemensplatz	Sacktannen
Silberberg	Warnitz
Slüterufer	Ostorf
Sodemanscher Teich	Lankow III

Sonnenkamp	Krebsförden I
Sonnenweg	Zippendorf
Speicherstr.	Werdervorstadt I
Sperlingsweg	Neumühle I
Spießordamm	Schelfstadt I
Stadionstr.	Ostorf
Starenweg	Neumühle I
Steinstr.	Paulsstadt I
Stern Buchholz	Göhrener Tannen
Stieglitzweg	Neumühle I
Stiftstr.	Feldstadt I
Stillfriedstr.	Lewenberg I
Stralsunder Str.	Neu Zippendorf
T Tallinner Str.	Neu Zippendorf
Tannhöfer Allee	Ostorf
Tappenhagen	Altstadt I
Taubenstr.	Schelfstadt II
Theaterstr.	Altstadt I
Töpferberg	Feldstadt I
Touristenweg	Friedrichsthal I
Trebbower Str.	Warnitz
Tulpenweg	Gartenstadt II
Turower Ring	Neumühle I
U Ueckermünder Str.	Lankow I
Uhlennest	Neumühle I
Ulmenweg	Lankow IV
Usedomer Str.	Lankow I
V Vaasaer Str.	Neu Zippendorf
Vidiner Str.	Neu Zippendorf
Virchowstr.	Werdervorstadt II
Von-der-Schulenburg-Str.	Großer Dreesch
Von-Flotow-Str.	Weststadt II
Von-Stauffenberg-Str.	Großer Dreesch
Von-Thünen-Str.	Paulsstadt II
Vor dem Wittenburger Tor	
1-11 (odd numbers only)	Weststadt II
13	Neumühle I
2-18 (even numbers only)	Neumühle I
Vor den Wiesen	Wüstmark I
Vossens Tannen	Krebsförden II
Voßstr.	Paulsstadt II
W Wacholderweg	Lankow IV
Wachtelweg	Neumühle III
Waisengärten	Werdervorstadt II
Waldschulweg 1	Zippendorf
Waldschulweg 2-40	Ostorf
Waldweg	Friedrichsthal I
Wallstr.	
1-41 (odd numbers only)	Altstadt II
45-67 (odd numbers only)	Paulsstadt II
2-46 (even numbers only)	Feldstadt I
50-68 (even numbers only)	Paulsstadt II
Walnußweg	Lankow IV
Walther-Rathenau-Str.	Werdervorstadt II
Warnitzer Str.	Friedrichsthal I
Wasserstr.	Görries II
Weidenweg	Friedrichsthal I
Weinbergstr.	Ostorf
Weißdornweg	Friedrichsthal I

Wendelstorfer Weg	Friedrichsthal I
Wendenhof	Wickendorf
Werderstr.	
1-1A	Werdervorstadt II
3-89 (odd numbers only)	Schelfstadt II
2-76 (even numbers only)	Werdervorstadt II
99-143	Altstadt I
Werkstr.	Wüstmark II
Werner-Seelenbinder-Str.	Weststadt I
Werner-von-Siemens-Str.	Wüstmark II
Wickendorfer Markt	Wickendorf
Wickendorfer Str.	Medewege
Wiesengrund	Krebsförden II
Wiesenhof	Wüstmark I
Wiesenberg	Zippendorf
Wilhelm-Hennemann-Str.	Gartenstadt I
Wilhelm-Maybach-Str.	Wüstmark II
Willi-Bredel-Str.	Weststadt I
Wismarsche Str.	
107-129 (odd numbers only)	Altstadt I
133-185 (odd numbers only)	Paulsstadt III
189-317 (odd numbers only)	Lewenberg I
321-405 (odd numbers only)	Lewenberg II
106-134 (even numbers only)	Altstadt I
136-194 (even numbers only)	Paulsstadt III
198-298B (even numbers only)	Lewenberg I
300-392 (even numbers only)	Lewenberg II
400	Medewege
Wittenberger Str.	Neu Zippendorf
Wittenburger Str.	
15-37	Altstadt I
39-97 (odd numbers only)	Paulsstadt II
99-121 (odd numbers only)	Weststadt II
40-104 (even numbers only)	Paulsstadt II
106-122 (even numbers only)	Weststadt II
Wolffschlucht	Friedrichsthal I
Wolgaster Str.	Lankow I
Wossidlostr.	Weststadt III
Wuppertaler Str.	Neu Zippendorf
Z Zeisigweg	Neumühle III
Zeppelinstr.	Görries II
Ziegeliehweg	Lankow I
Ziegelhof	Lankow II
Ziegelseepark	Werdervorstadt I
Ziegelseestr.	Werdervorstadt I
Ziegelwerder	Mueß
Ziegenmarkt	Schelfstadt II
Zingster Ring	Lankow I
Ziolkowskistr.	Mueßer Holz
Zu den Störwiesen	Mueß
Zum Alten Bauernhof	Mueß
Zum Bahnhof 2-11	Paulsstadt III
Zum Bahnhof 13-43	Paulsstadt IV
Zum Birkenhorst	Krebsförden I
Zum Kirschenhof	Warnitz
Zum Reppin	Mueß
Zum Schulacker	Krebsförden I
Zur Feuerwache	Wickendorf



Mobile hazardous waste unit route plan

The following hazardous material collection points will be visited by the mobile hazardous waste unit:

- **Feldstadt**
Bertha-Klingberg-Platz
- **Friedrichsthal**
Car park in
Wolffsschlucht
- **Görries**
Lilienthalstraße
- **Mueß**
Zum Alten Bauernhof
- **Neumühle**
Treppenberg next to the glass container
- **Neu Zippendorf**
Berliner Platz (lower part)
- **Schelfstadt**
Schelfmarkt/Lindenstraße
- **Warnitz**
Trebbower Straße 2
- **Werdervorstadt**
Bornhövedstraße 71
- **Weststadt**
Supermarket on Bertolt-Brecht-Straße
- **Wickendorf**
Lübstorfer Weg 6-12

You can find up-to-date information on dates at www.sds-schwerin.de.

Hazardous materials are to be given to the mobile hazardous waste unit specialists in person at collection times.

Leaving waste at the collection point ahead of time is considered illegal waste disposal and will result in a fine.

Please note:

Bring your hazardous materials to the mobile hazardous waste unit in sealed, leak-proof containers.



Disposal of electronic waste

Since July 2016, large retailers have been obligated to take back old electrical and electronic devices. This is prescribed by the new Electrical and Electronic Equipment Act (ElektroG2). Businesses are considered "large" retailers if they provide more than 400 m² of sales space for electrical and electronic devices, as are online retailers with the same amount of space dedicated to shipping and storage. This take-back obligation shall apply in the event of the purchase of a similar device. Large retailers must also take

back small devices (no edges longer than 25 cm) without the purchase of such a device.

What counts as electronic waste?

Changes to this legal situation are currently in the pipeline. Photovoltaic elements from private households can be taken to recycling centres north and south. Electric cookers, washing machines, dishwashers, fridges and freezers, televisions, radios, computers, lawnmowers, small appliances, mobile phones, CD or MP3 players, microwaves and electric toys.

What does not count as electronic waste?

Scrap metal, batteries and rechargeable batteries.

How should electronic waste be disposed of?

Via the retail sector ("large" distributors/retailers), public collection points at recycling centres or bulky waste collection. Waste from households is accepted for free. Electronic waste does not belong in residual waste.



Lithium-ion batteries do not belong in residual waste

Defective lithium-ion batteries have an increased risk of self-ignition and may result in fires during transport or at a waste sorting plant. This may result in poisonous vapours, with the consequence being economic damage to vehicles and facilities. Therefore, the rule is: remove lithium-ion batteries from old devices BEFORE disposal. Lithium-ion batteries are electrical waste.

You can get information about the disposal of electronic waste from the waste advice team and the SDS website.

Tel. (0385) 633 1670

Disposal of problematic waste

What is problematic waste?

Contaminated household waste, such as batteries, paint, varnish, cleaning agents, rechargeable batteries and even energy-saving bulbs.

Where can problematic waste be disposed of?

- Only at
- the recycling centres (more on page 9)
- the mobile hazardous waste unit

Never via your grey bin!

How much does it cost?
It is free of charge.



Schwerin spring cleaning with campaign week from 11 to 16 March 2024

After the spring cleaning week with many helping hands, everyone will celebrate the scrubbing party on Bertha-Klingberg-Platz on 16 March.

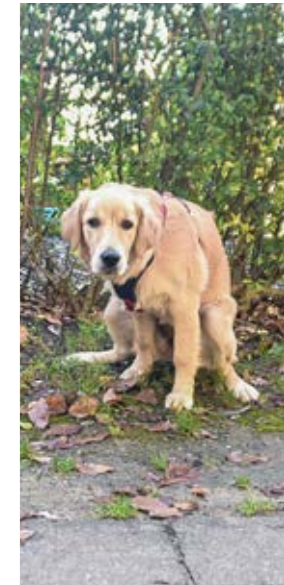
Last year, a wide range of participants were recruited for the cleaning campaign. Clubs, companies, daycare centres and school

classes, neighbours from the surrounding area and families with a total of around 5,900 participants tackled the dirty corners and hard-to-reach routes in the city, parks and forests.

Around 18 tonnes of rubbish was collected, for which around 2,400 red bags were handed out. In 2024 there will also be the

popular scrubbing party, which is well received by young and old and offers music and entertainment.

Planning for this year's campaign week is in full swing and we would be delighted if you would continue to give us your loyalty and actively support us during the 2024 spring clean-up.



Dog toilets on many corners

Bag dispensers for getting rid of dog waste

The SDS has set up beelloo bag dispensers in 80 locations, mostly in close proximity to green spaces and on footpaths. These dispensers are refilled on a weekly basis.

Here's how it works:

To use the dog toilets, dog owners simply take a bag from the dispenser, put the bag over their hand and pick up the parcel their dog left behind. After picking up the dog waste and tying the bag, simply dispose of it in the nearest rubbish bin.

You can get dog waste bags for free from here:

The public utility company's customer centre
Mecklenburgstraße 1 and
Eckdrift 43 - 45

Recycling centres
North – Lankow:
Ziegelweg 12
South – Gartenstadt:
Ludwigsluster Chaussee 53

The Citizen's Office
Am Packhof 2 - 6

Please note:

You can find a complete overview of the bag dispensers online at www.sds-schwerin.de.

Cleanliness in green areas

Whether it's a place of silence and relaxation, a playing field for exercise, fun and sport or a meeting place for friends and strangers: Schwerin's green and recreational areas attract thousands of visitors every day, and not just in summer.

This delights all those who deal with the upkeep of the facilities. Parks are essential for leisure and recreation in

the city. But in places where so many people come together, even seemingly small lapses and negligence have great consequences – and mountains of waste can pile up.

We are used to leaving it up to others to remove these mountains: "Someone will clean that up," you think, but you're wrong. The most effective way to get to

grips with waste is the same way that it develops: with lots of small contributions. Take your waste home with you, or so the slogan goes. The green parks need responsible visitors.

Our own behaviour also contributes to the appearance of the green spaces on our doorsteps.

Many thanks for your cooperation.





Old clothing collection and second hand

Swapping & gifting

- ebay-kleinanzeigen.de
Gifting and swapping



- tauschticket.de

- oekoportal.de
with ecomoebel.de

- foodsharing.de



Second-hand textiles

- Re-sales



- resales.de

Used clothing containers

A total of 114 used clothing containers can be found in Schwerin:

- 61 from DRK
- 38 from Kloster Dobbertin
- 10 Stück from Zunkunftswerkstatt e.V.
- 5 from Arbeitslosenverband Schwerin

Old clothing collection in Schwerin

In cooperation with four charitable organisations (Arbeitslosenverband, Dobbertiner Werkstätten, DRK, Zukunftswerkstatt e.V.), the city of Schwerin is carrying out an old clothing collection.

As part of this, appropriately-marked collection containers are available throughout the city.

There is also the option of dropping off old clothing at charity shops. From here, the clothing is given to those in need for a small fee.

ALTKLEIDERSAMMLUNG

IN KOOPERATION MIT:



Furniture exchange

The "ANKER" furniture exchange collects donated furniture for free. It is refurbished in the workshop and distributed to charity shops or sold in the exhibition house. If you want to buy cheap furniture, this is the place for you.

All furnishings are available, from living rooms to kitchens with electrical appliances. You can find more information online at:

www.anker-sozialarbeit.de

Second hand

When we downsize or sell a home, we are presented with the task of parting with furniture or household appliances that we have used or even become fond of. A utility value check may uncover an old but still useful item that you can pass onto a new owner by using the well-developed network of second hand shops and exchanges in Schwerin.

We have put a list of some useful websites in the column on the left.



Addresses of charity shops

Kleiderkammer des DRK
Güstrower Straße 4
19055 Schwerin
Tel.: (0385) 555 73 00

Dobbertin Abbey
Am Kloster
19399 Dobbertin
Tel.: (038736) 862 01

Kleiderkammer der Zukunftswerkstatt e.V.
Ziegeleiweg 12
19057 Schwerin
Tel.: (0385) 61 73 610

Arbeitslosenverband Schwerin Haus der Begegnung
Perleberger Str. 22
19063 Schwerin
Tel.: (0385) 39 78 163

Anker furniture exchange in Schwerin
Rogahner Straße 4, 19061 Schwerin
Tel.: (0385) 2022 61 42

Opening hours:
Mon. to Fri.
10:00 am - 4:00 pm

Second-hand shops Anker in Schwerin "Bunte Kiste"
Große Wasserstraße 39
19053 Schwerin
Tel.: (0385) 20 22 61 706

Opening hours:
Mon to Fri: 10 am - 4 pm

"Stöberstube"
Steinstr. 5
19053 Schwerin
Tel.: (0385) 20 22 61 43

Opening hours:
Mon to Fri:
10 am - 4 pm

ALV charity shop
Perleberger Straße 22
19063 Schwerin
Tel.: (0385) 39 78 163

Opening hours:
Mon. to Thurs.: 8:30 am - 3:30 pm
Fri. 8:30 am - 11:30 am

Please note:

Only bring your donations while the shop is open.



Pavement cleaning – what to consider

Pavement cleaning is transferred to the residents in accordance with the statute on road cleaning.

This includes combined bike paths and footpaths, connecting paths and stairways, and sections of roadway marked as footpaths.

What needs to be done? Regularly sweeping footpaths ensures that they are free from sand and other small pieces of dirt like leaves and fruit from nearby trees. It makes no difference who owns the tree. Regular cleaning of the footpaths make them safer to use.

Sweeping dirt or leaves from the pavement on to the road is not allowed. Please dispose of whatever you sweep up in the corresponding waste containers on your property.

Weeds which sprout on footpaths must also be removed by the residents. This ensures that footpaths are also kept in a tidy condition. You can find more information in the statute on road cleaning and on our website.

The SDS will assist residents on leafy streets in disposing of the leaves from the trees along the street. More than 160 FIBCs/big bags will be provided in the period from the middle of October until November.

Road and pavement cleaning

Clean streets and footpaths are of particular interest to cities, communities and residents.

The cleaning of footpaths and the emptying of public rubbish bins are all part of a clean city.

The statute on fees for road cleaning. The obligations of the city and the residents are designated according to cleaning category in the statute on road cleaning depending on the importance and requirements.

Cleaning work on public streets and places,

The tasks of road and pavement cleaning are defined in the statute on road cleaning and

Overview of the obligations of the city and residents from the applicable statute:

Cleaning categories	Obligation of the city	Obligation of the residents
Cleaning category 0	Clean the entire road and the pavement 6 x per week	–
Cleaning category 1	Clean the road 3 x per week	Clean the footpaths, bike paths, grass verges, parking bays, etc. on a weekly basis
Cleaning category 2	Clean the road on a weekly basis	Clean the footpaths, bike paths, grass verges, parking bays, etc. on a weekly basis
Cleaning category 3	Clean the road every 14 days	Clean the footpaths, bike paths, grass verges, parking bays, etc. every 14 days
Cleaning category 4	Clean the road every four weeks	Clean the footpaths, bike paths, grass verges, parking bays, etc. every four weeks
No cleaning category	–	Clean the entire road from the property to half-way across the road every 14 days

The streets within Schwerin are assigned to individual street cleaning classes in accordance with the street cleaning statutes. Generally speaking, the residents of streets not named here are responsible for cleaning the street and pavement.

aning on public streets. The street cleaning calendar for the cleaning vehicles can be found online at www.sds-schwerin.de. SDS has created a street cleaning concept for streets where permanently parked cars hinder cleaning with the road sweeper.

A street cleaning fee is collected from the residents for the street cleaning carried out on public streets. The amount of the street cleaning fee is determined by the frequency of cleaning in a year and is set according to the street cleaning fee statutes.

Cleaning the pavement also includes removing special contaminants, such as dog mess, weeds and waste left on the pavement. SAS mbH carries out street cle-

Here, 74 streets were included in which a basic cleaning is carried out approximately every 2 years by means of a one-day stopping ban.

Obligations with regard to winter road maintenance are also regulated in the street cleaning statutes.

Please note:

Do not sweep waste and leaves from the pavement on to the road!



SDS winter road maintenance in numbers:

- Gritting distance of 487 km
- Street length of 271 km
- Pavement area of 175,500 m²
- 283 public transport stops
- 13 vehicles for the streets
- Ø 600 t of grit per season
- Ø 2000 working hours per season
- Ø 90 working days per season
- 95 public disabled parking spaces

Winter road maintenance concept

The SDS – Stadtwirtschaftliche Dienstleistungen Schwerin (Schwerin Municipal Services), operated by the city of Schwerin, is responsible for organising, carrying out and coordinating winter maintenance of the roads and footpaths in the state capital.

Schwerin's department of roads is responsible for carrying out winter road maintenance on sections of federal roads. Winter road maintenance includes removing snow, gritting packed snow and icy surfaces according to the city's actual and financial capacity and in accordance with the requirements of the state of Mecklenburg-Western Pomerania's Roads and Routes Act as well as the applicable legal regulations. Schwerin's winter road maintenance concept was designed as a basis for action and organisation. The responsibility of the city of Schwerin continues to exist exclusively in accordance with the legal framework shaped by established law.

Please note:

Change your behaviour on the road in wintery road conditions!



Winter road maintenance – services and obligations

The objective of winter road maintenance is to ensure the safety of public roads and footpaths. Every road user has the obligation to ensure road safety by adjusting their behaviour according to the weather conditions when driving in the winter.

The statute on road cleaning for the city of Schwerin determines the scope of winter road maintenance services. The basis for this is the winter maintenance concept introduced in 2017.

The city's winter road maintenance obligations

The SDS, which is operated by the city, carries out winter road maintenance on important public roads as a municipal provider. Traffic routes are weighted according to their importance for the communal infrastructure and organised into gritting levels. Winter services are classified using the following characteristics:

Level A

- Top priority, approx. 280 km
- Main roads and thoroughfares,
- Bus routes, roads with public transport,
- Roads with heavy commuter traffic to and in industrial and commercial areas,
- Roads with steep gradients or steep inclines

Level B

- Second priority, approx. 132 km
- Connecting roads,
- Residential streets,
- Roads by schools

Level C

- Third priority, approx. 75 km
- Other roads in residential and commercial areas



No communal winter road maintenance

- Private roads, traffic-calmed roads, service roads,
- Roads on which winter road maintenance technology cannot be used

The city's winter maintenance obligations for footpaths

The city bears responsibility for the winter maintenance on footpaths with high public significance.

This includes:

- Pedestrian crossings
- Public places
- Transfer points for local public transport
- Tram and bus stops without residents nearby
- Footpaths in boulevard and promenade areas
- Pavements without immediate adjoining residential properties
- Cycle paths

What will be done?

- Clearing and gritting the roads according to the gritting level by using salt and brine
- Clearing snow from the gritting area if required for road safety,
- Gritting footpaths and bike paths

When?

In accordance with the statute on road cleaning, footpath maintenance takes place between 7:00 am and 8:00 pm. Roads and bike paths will be cleared according to capacity in this period.

Any black ice forming after 8:00 pm will be removed by 7:00 am on the following day.

Winter road maintenance – obligations of owners of adjoining properties

The duties of residents are related to public areas along the width of their property and include the following areas:

- Combined pavement and cycle paths,
- Connecting roads and stairways,
- Local transport stops in the adjacent pavement area,
- Streets where summer cleaning is also the responsibility of the residents.

What needs to be done?

- Decreasing surface slipperiness,
- Clearing snow when required for road safety.

Which resources can be used?

- Gravel,
- Sand,
- Commercially available anti-skid agents.
- **No salt or de-icing agents!**

Why?

- Property owners are responsible and liable for maintaining road safety.

When?

- Operating times: 7:00 am to 8:00 pm,
- and removing any black ice or snow forming after 8:00 pm by 7:00 am on the following day.

How much needs to be done?

Decreasing surface slipperiness and snow clearing must be ensured over a width of 1.50 m on the pavement.

If the width of the pavement is under 1.50 m, the entire width of the pavement is to be cleared of snow and black ice.

The cleared snow is to be stored on the roadside on a third of the outer part of the pavement.

If the snow encroaches onto the road, the city guarantees the snow will be removed.

A question of liability

We all use roads and pavements. Of course, our needs and wants from winter road maintenance are all very different. Nevertheless, road safety must be the main focus. The winter road maintenance obligation for residents comes from the statute on road cleaning. Violations of this obligation may have legal consequences. Residents are liable for any accidents if they do not fulfil their obligations and may – in the event of physical injury resulting from negligence, for example – face criminal proceedings. As a result, property owners should protect themselves by taking out suitable liability insurance. You can also contact us for more information:

Tel.:
(0385) 633 16 75



This magazine was printed on sustainable paper!

Imprint

Publisher

SDS – Stadtwirtschaftliche Dienstleistungen Schwerin (Schwerin Municipal Services), Operated by the state capital Schwerin Eckdrift 43 - 45 19061 Schwerin

Editing and graphics

hauspost customer magazine, maxpress agentur für kommunikation GmbH & Co. KG Stadionstraße 1 19061 Schwerin

Photos

creative collection, fotolia, Pixabay, maxpress, SDS

Updated

01/2024

Subject to change



Information

- The snow on pedestrian areas is to be cleared or slipperiness decreased up to the edge of the kerb.
- It must be ensured that public transport can reach stops unimpeded.
- Putting the cleared snow on the side of the road – and thus blocking the drains, inlet pipes, water hydrants, maintenance shafts, etc. – is forbidden.
- Remember wheelchair users and pushchairs when carrying out winter road maintenance and ensure that they too can continue to use the pavement unimpeded.
- Owners of nearby developed land can transfer the obligation to grit the paths and roads and clear them of snow and ice to their tenants.

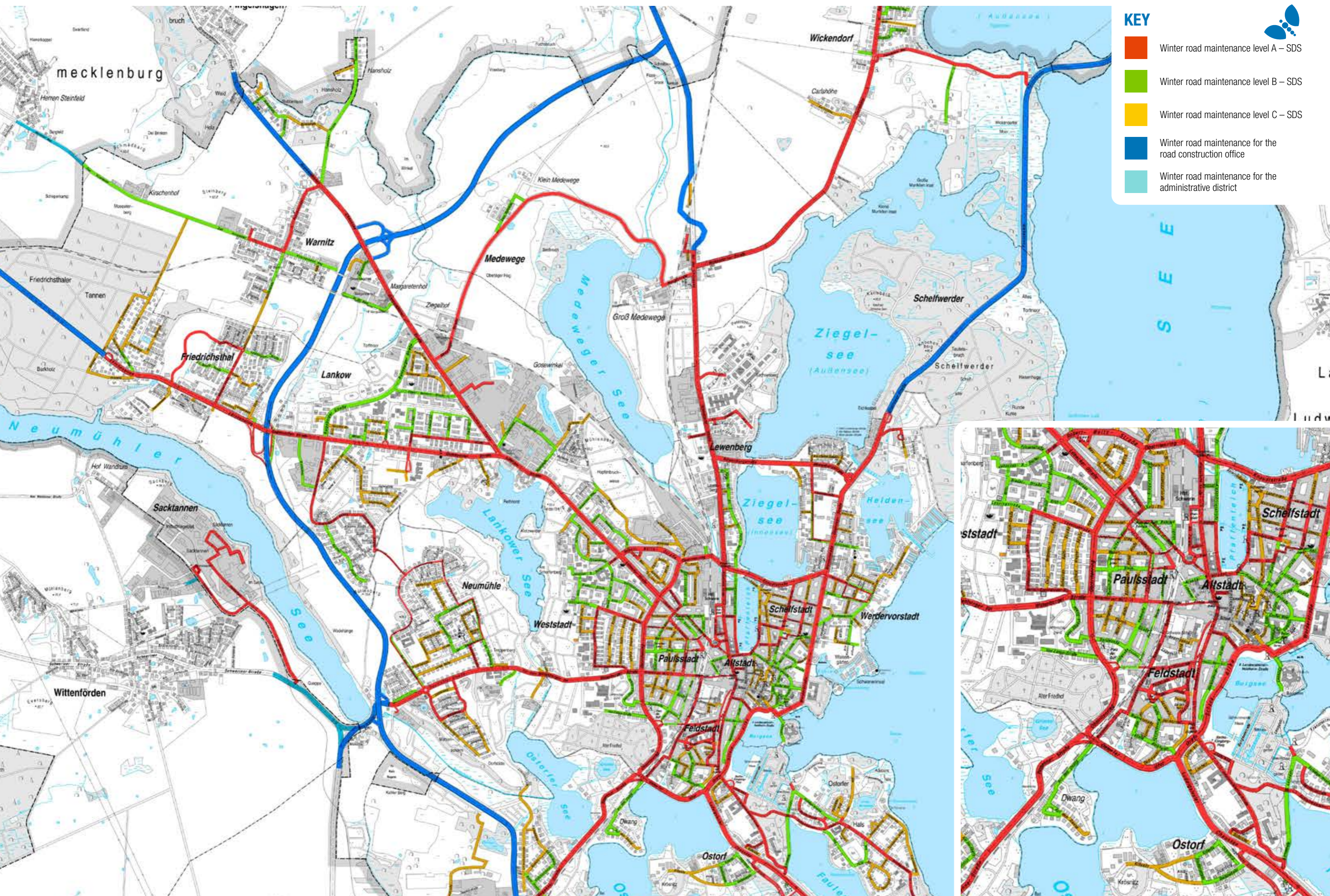
Please note:

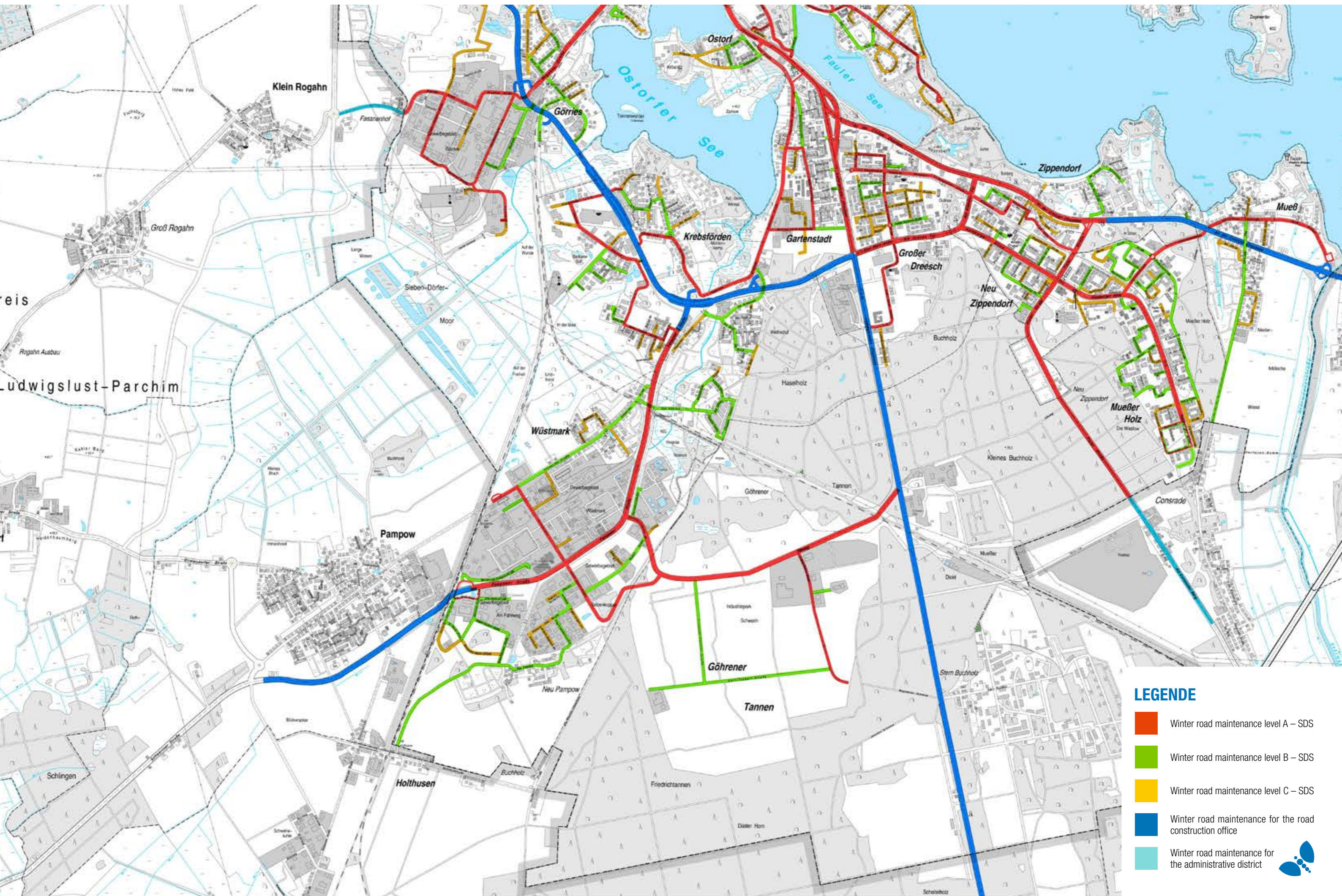
Anyone who cannot personally fulfil their winter road maintenance obligations should use private service providers.



KEY

- Winter road maintenance level A – SDS
- Winter road maintenance level B – SDS
- Winter road maintenance level C – SDS
- Winter road maintenance for the road construction office
- Winter road maintenance for the administrative district





LEGENDE

- Winter road maintenance level A – SDS
- Winter road maintenance level B – SDS
- Winter road maintenance level C – SDS
- Winter road maintenance for the road construction office
- Winter road maintenance for the administrative district



What can be disposed of where?

Explanation of abbreviations: **K** – Old clothing collection container, **B** – Construction waste **P** – Problematic waste, **SPM** – Bulky waste disposal

	See key	Recycling centres	Yellow bin/ yellow sack	Blue bin/paper container	Organic waste bin/compost	Glass container (sorted by colour)	Household waste bins	Page reference		See key	Recycling centres	Yellow bin/ yellow sack	Blue bin/paper container	Organic waste bin/compost	Glass container (sorted by colour)	Household waste bins	Page reference
Drain cleaner	P	•						7, 9	Cardboard boxes		•						4, 9
Rechargeable batteries	P	•						7, 9	Catalogues, brochures		•						4, 9
Ring binders							•	6	Cassettes							•	6
Aluminium foil and lids		•	•					7, 9	Pushchairs	SPM	•						6, 9
Plastic plant pots		•						2	Clothing	K	•						8, 9
Ash							•	6	Litter for small animals							•	6
Car batteries/tyres	P	•						7, 9	Bones					•			6
Car care products	P	•						7, 9	Button batteries	P	•						7, 9
Metal baking tins		•						9	Cosmetics packaging (plastic)		•						2
Batteries	P	•						7, 9	Crown cork bottle caps		•						2
Construction rubble	Specialist waste disposal company								7	Kitchen waste					•		6
Corrosives	P	•						7, 9	Coolant	SPM	•						9
Pictures/picture frames							•	9	Plastic packaging		•						2
Lead glass, lead crystal							•	6	Plastic products (buckets, bowls)		•						9
Flowers					•			4	Tinsel								6
Books				•				3, 9	Leaves							•	4
Camping furniture	SPM	•						6, 9	Leather scraps	K	•						6
Chemicals	P	•						7, 9	Glue and adhesives	P	•						7, 9
CDs/DVDs							•	6, 9	LED lamps	P	•						7, 9
Roofing felt	Specialist waste disposal company								7	Fluorescent tubes	P	•					7, 9
Disinfectants	P	•						7, 9	Solvents, thinners	P	•						7, 9
Photographic slides							•	6	Mattresses	SPM	•						6, 9
Cans (aluminium)		•						2, 9	Corn chips						•		5
Printer cartridges	P	•						7, 9	Medication							•	6
Egg cartons (cardboard)				•				3, 9	Furniture	SPM	•						6, 9
Disposable tableware		•						2	Paper		•						3, 9
Disposable syringes							•	6	Pans (metal)		•						9
Electrical and electronic devices	SPM	•						9	Plants, plant remains					•			4
Energy-saving bulbs	P	•						7, 9	Pesticides	P	•						7, 9
Bikes		•						9	X-ray images							•	6
Bike inner tubes/tyres							•	9	Foam packaging			•					2
Leftover paint/varnish	P	•						7, 9	Screw caps		•						2
Duvets	K	•						8, 9	Scraps, metal		•						9
Window glass	B							6	Shoes	K	•						6, 8
Films							•	6	Food waste (cooked)					•			6
Photo chemicals	P	•						7, 9	Mirrors							•	6
Photos							•	6	Toys (without electronics)							•	6
Frying fat (solid)					•			6	Spray cans (empty)			•					2
Floor coverings	SPM	•						6, 9	Vacuum cleaner bags							•	6
Garden waste/green cuttings		•			•			4, 9	Fabric remnants							•	6
Tableware (porcelain, ceramic, glass)		•					•	6, 9	Polystyrene (packaging)			•					2
Drinks cans (without deposit)			•					2	Wallpaper scraps							•	6
Drinks cartons (Tetra Pak)			•					2	Tea bags						•		4
Glass (except lead and window glass)						•	•	3, 9	Carpets		•						9
Light bulbs							•	6	Tetra Pak			•					2
Halogen lamps	P	•						7, 9	Toner cartridges	P	•						7, 9
Wood preservers and impregnating agents	P	•						7, 9	Pots		•						9
Toiletries, toilet paper							•	6	Envelopes			•					2
Insecticides	P	•						7, 9	Video cassettes							•	6, 9
Coffee filters, coffee grounds					•			4	Leftover wax							•	6
Coffee capsules, even bio-degradable ones			•				•	4	Nappies							•	6
Newspapers, magazines												•					3, 9

Separating waste - helps to gain valuable materials

Verpackungen
Packaging
Упаковка

Altpapier
Paper
Макулатура

Altglas
Glass
Отходы стекла

Bioabfall
Organic waste
Биомусор

Restabfall
Residual waste
Остаточные отходы

Spezielle Abfälle
Special waste
Специальные отходы

Separate waste – show responsibility Будьте ответственными – сортируйте отходы

Eckdrift 43-45
19061 Schwerin

E-Mail:
abfall@sds-schwerin.de

Internet:
www.sds-schwerin.de

0385 - 6331670



Recycling

In 2022, a total of 43,600 tonnes of waste was collected from Schwerin households, 24,003 tonnes of which was destined for recycling.

This corresponds to a per capita volume of 441 kg/inhabitant and year (E*a) and a recycling rate of 242 kg/E*a. Of this alone 73.3 kg/E*a of biowaste was collected and processed at BAVA.

An improvement in the recycling rate can be achieved in particular through increased, single-variety collection of lightweight packaging via the yellow sacks and the yellow bins can be achieved.



Photo: www.ihlenberg.de

Processing residual waste from Schwerin households

The residual waste collected from households is reloaded into effective transport loads at the SAS mbH reloading station and transported to IAG-Ihlenberger Abfallentsorgungsgesellschaft mbH for the residual waste to be sorted. By using magnetism, air turbulence and infrared technology for light plastics, the

following types of waste can be recovered during the sorting process: metals, waste paper, cardboard boxes, plastics, biogenic waste and waste with a high heating value. Ferrous and non-ferrous metals are recycled in the smelting process. Plastics, paper and cardboard boxes are marketed as recyclables. The waste with a high heating value is

sent to incineration plants, where the waste heat produced is used for district heating and/or generating energy. The biogenic waste is sent to the Rosenow mechanical and biological treatment centre waste incineration plant, where it is processed into compost.

Recycling routes for recyclable materials



No plastic in the biowaste!

For daily kitchen biowaste collections, please only use the commercially available paper bags.

Biowaste fermentation plants cannot process plastic-based collection bags. The same goes for bags furnished with the label: "biodegradable".

It is crucial for the continued use of the resulting compost that it contains practically no impurities.

Waste glass

The waste glass from the public containers is collected separately according to colour – clear, green and brown – by ALBA Nord GmbH, put into temporary storage and transported to nearby glass factories for melting down.

Lightweight packaging / Grüner Punkt

Lightweight packaging from recyclable materials containers, yellow sacks and yellow bins are collected by SAS mbH and taken to the recycling facilities located in the contract area. The system operator "Duales System" is responsible for recycling lightweight packaging. The materials are sorted and recycled in their own plants. Non-recyclable components are thermally used.



Photo: Beger

Bulky waste

Bulky waste is collected and pressed in a special SAS mbH vehicle. Metal parts and wood are sorted using excavators and delivered to the appropriate recycling companies according to type.

Bulky waste remnants are processed into substitute fuels.

Waste paper / cardboard boxes

Waste paper and cardboard boxes are a sought-after recyclable material on the market. SAS mbH presses material collected from households and public recycling containers into transportable bales and trades them at current prices.

Waste textiles

The waste textiles collected in the containers of charitable organisations are delivered to a recycling company. Reusable pieces of clothing were sorted out for charity shops beforehand. The remaining textiles are made into insulation and cleaning rags, primarily for the automotive and construction industries.

Electrical appliances

Waste electrical appliances are transported to recycling plants by EAR, the foundation established by manufacturers.

The city of Schwerin has taken over the collection of waste electrical appliances and uses the so-called primary treatment facility in Stern Buchholz for this purpose.

Recyclable and dangerous components are removed. Empty metal cases are sent to scrap metal recycling.

Biowaste

Biowaste is collected by SAS mbH and fermented at their treatment facility (biowaste processing plant). Biogas – which is used to generate power and heat with a combined heat and power unit – is produced here. The heat recovered is also used for the process's own heat requirements.

ALBA Nord GmbH
Ziegeleiweg 12
19057 Schwerin-Lankow

ALBA Nord GmbH
Zeppelinstraße 20
19061 Schwerin-Görries

ALBA 
Wir sind die Zukunft.

Ihr Spezialist für Entsorgungsfragen

- Entsorgung
- Behälterdienste aller Art
- Wertstoffhöfe
- Abbruch
- Fettabscheider, Entsorgung und Reinigung



Wir beraten Sie gern.

Tel. +49 385 4811-284
nord@alba.info

nord.alba.info

Please note:

Single-variety waste makes recycling easier.



“FOR A CLEAN SCHWERIN”

SDS – Stadtwirtschaftliche Dienstleistungen Schwerin (Schwerin Municipal Services)

Public green spaces

Public green spaces, plants for roadsides and urban squares, the forests and biotopes, sports fields and playgrounds, as well as swimming spots in the city – all of these are part of Schwerin’s urban green spaces. It is the duty of the SDS’s public green spaces division to maintain these communal facilities horticulturally and structurally, as well as to plan new green spaces and to oversee the building work.



Cemeteries and burials

Schwerin’s cemeteries are places of remembrance and mourning. At the same time, they are now also popular green spaces of relaxation and tranquillity for all generations in the middle of a lively city. SDS discharges the tasks of cemetery and burial services for the state capital with a wide range of offers. The Alte Friedhof, the Waldfriedhof and the mourning halls at the cemeteries are under the jurisdiction of SDS.



**WE TAKE ON
TRAINEES!**
Find more information at
www.sds-schwerin.de



Waste management

Whether it’s non-recyclable waste, waste glass, waste paper, furniture or organic waste, transporting it away is a logistical feat. The waste management department of the SDS has ensured smooth waste collection since 2004. Waste disposal partners are contractually obligated to carry out practical tasks, such as taking away collection containers and emptying glass containers.

Road maintenance

Schwerin’s street network includes around 350 kilometres of paths and streets. Employees in the street maintenance department of the SDS ensure that the streets are and remain in good condition. Road safety on the streets of Schwerin is of great importance, especially in winter. The annual winter road maintenance season runs from 01/11 to 15/04 for SDS.



SDS – Stadtwirtschaftliche Dienstleistungen Schwerin (Schwerin Municipal Services)

municipal enterprise operated by the state capital Schwerin

Eckdrift 43 - 45 · 19061 Schwerin

info@sds-schwerin.de · www.sds-schwerin.de