



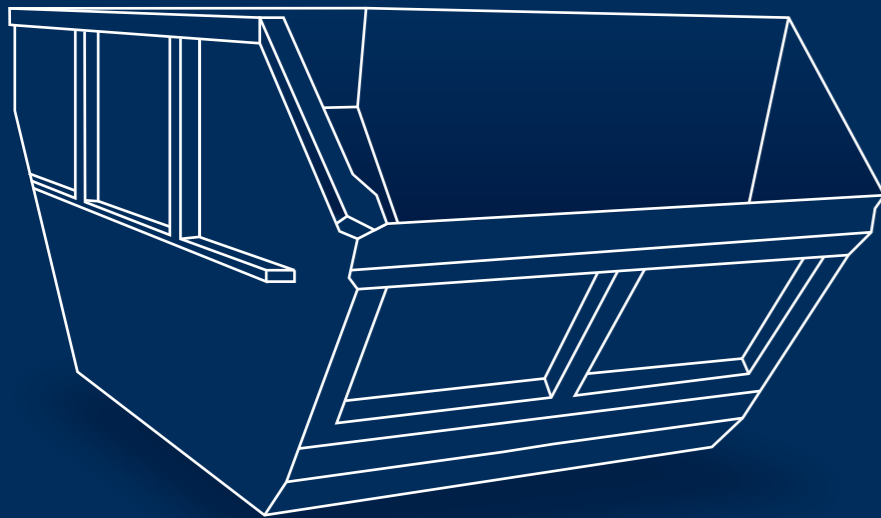
2026 GUIDEBOOK

FOR A CLEAN SCHWERIN



- PREVENTION • RECYCLING • DISPOSAL
- REFUSE COLLECTION CALENDAR
- STREET CLEANING
- WINTER ROAD MAINTENANCE

Online bestellen ...



shop.albaclick.de

... und nachhaltig entsorgen

- Fettabscheiderreinigung
- Containerdienstleistungen
- Betrieb von Wertstoffhöfen
- Entsorgung und Recycling

Wir beraten Sie gern.

Tel. +49 385 4811-284

nord@alba.info

nord.alba.info



**Contact the City
Security service
Main Office**
(0385) 545 18 30
Fax:
(0385) 545 18 29
Email:
ordnungsdienst@schwerin.de

**Contact
SDS – Stadtwirtschaftliche
Dienstleistungen Schwerin
(Schwerin Municipal Services)**

**Waste collection /
Organic waste bin**
(0385) 633 16 72
(0385) 633 16 76
(0385) 633 16 78
(0385) 633 16 80

Public relations
(0385) 633 16 79

**Recycling systems
(0385) 633 16 71
Recycling centres**
North: (0385) 48 07-80 47
South: (0385) 395 14 0

**Legal questions and questions
about fees (0385) 633 16 71**

**Commercial waste advisory
service**
(0385) 633 1681

Problem and special waste
(0385) 633 16 70

**Street cleaning and illegal
waste disposal**
(0385) 633 16 75

Road maintenance
(0385) 644 35 34

Winter road maintenance hotline
(0385) 633 26 33

Fax:
(0385) 633 16 77

Email:
abfall@sds-schwerin.de

Website:
www.sds-schwerin.de



Bernd Nottebaum

First Deputy Mayor and Alderman for Construction,
Environment and Transport

Dear people of Schwerin,

Cleanliness in the urban landscape is and will always be an issue that concerns us all.

Guests to our city regularly comment on how neat and tidy Schwerin looks – but we often see this differently as we go about our lives. The fact is, having a clean city takes a lot of effort. It is the result of many different helping hands – in the SDS and SAS operations, but also you, the residents of Schwerin.

Despite slightly decreasing waste volumes in 2025 – 19,000 tons of household waste, 3,400 tons of bulky waste and 9,000 tons of organic waste – there are unfortunately also developments which we find worrying. The number of reported fly tipping sites is still at a high level. This illegal disposal of waste doesn't just make people angry, it also generates costs of around 50,000 euros every year which we all have to bear. It's so easy to dispose of waste properly: once a year, every household can have bulky waste collected from their homes free of charge, and our recycling centres accept electrical and electronic items for free.

One less piece of rubbish on the street is a little more quality of life for all of us. If everyone does their part – separating waste correctly, not carelessly leaving things lying around and keeping things tidy – Schwerin will be even more beautiful and liveable.

We have a special anniversary in 2026 for you to join: the spring clean, our community campaign for a clean Schwerin, will celebrate its 30th anniversary from 16–21 March 2026. For thirty years, clubs, schools, neighbourhoods and many volunteers have gotten involved in tidying up our paths, parks and shore areas. And at the end of the week, we celebrate our traditional "scrubbing party" – a great opportunity to experience our community and show that environmental protection can also be fun.

This waste guidebook provides you as usual with all the key information regarding waste collection dates, disposal options and useful tips to reduce waste. And if you want to keep on top of it all, you can use the waste app with its reminder function for your own bins.

You are cordially invited to participate in our anniversary spring clean – for a clean Schwerin – and maybe we'll see you at the scrubbing party!

Best wishes,
Bernd Nottebaum
First Deputy Mayor



Topics

Contact	Page 1
Waste prevention and recycling management	Page 2
Yellow bins – Lightweight packaging Changes to the lightweight packaging collection	Page 3
Blue bins – Waste paper Waste paper	Page 4
Brown bins – organic waste, garden waste	Page 5
Grey bins – non-recyclable waste	Page 6
Bulky waste	Page 6
Fee notice Digital waste management 2.0	Seite 7
Construction waste	Page 8
Recycling centres - Addresses - Opening hours - Phone numbers	Page 9
Refuse collection calendar - Collection days in detail	Page 10 - 15
Electronic waste	Page 16
Problem waste	Page 16
Lithium-ion batteries	Page 16
Spring-clean Nice.Clean.Schwerin.	Page 17
The thing about old textiles	Seite 18
Street cleaning	Page 19
Winter road maintenance - by SDS - Residents' obligations	Page 20-21
Winter road maintenance map	Page 22-25
Overview - What is disposed of properly and how?	Page 26
Waste separation	Page 27
Waste recycling	Page 28



Product responsibility

The European legislature is, as part of so-called "product responsibility", increasingly obliging manufacturers to design products in such a way that the waste generated as a result of their production and use is reduced. The keywords here are: durability, reparability, use of recyclable materials. These properties are part of the so-called eco-design. The Blue Angel label offers initial guidance here.



Green Button eco label

The Green Button state textile label was started in September 2019 by the Federal Ministry for Development. The aim is to protect people and the environment in the supply chain – from fibre to hanger. If you find this seal on an item, you can be sure that you are buying socially and ecologically produced textiles.

Packaging waste to decrease!

From 2023, food and drink providers in the "to-go" sector must also provide reusable packaging that must not be more expensive than disposable options. Small outlets such as snack shops and kiosks are exempt from this obligation, but customers will need to fill containers they have brought with them.

Please note:

Waste avoidance saves on raw materials and energy, protects the environment and reduces costs and charges for you.

Waste prevention and recycling management



Waste is both a product and reflection of our affluent society. Nearly everything that surrounds us – be that furniture, vehicles, consumer goods or food – will become waste once it stops being used. Our planet's resources are limited. Prosperity with less consumption of resources and less waste is not only conceivable, it is also the order of the day.

As waste is always generated from former raw materials and products, waste prevention and recycling management with the use of recycled materials make an important contribution of the preservation of our planet's resources.

In the following sections on waste separation, recycling and second hand offers, you'll learn how you as a consumer can

strengthen the reuse and recycling of a product in its life cycle from raw material to waste.

Of course, the best waste is waste which isn't generated in the first place! That's why we want to take this opportunity to give you tips on how to avoid waste.

- Avoid elaborate product packaging, gift packaging or single-portion packaging: use reusable containers instead of single-use containers.

- If possible, buy unpackaged food.
- Don't use disposable products: when purchasing products like electrical appliances, pieces of furniture or toys make sure they're durable or easy to repair.

- Choose environmentally-friendly products: choose recycled products made from waste paper or other waste materials.

- Use reusable packaging for things like detergents or spices.

- When buying, check for recyclable materials like glass or paper, wood and metal.

- Avoid batteries: use products with solar cells, rechargeable batteries or power supplies.

Waste separation pays off!

In a city with more than 98,000 residents, a great deal of waste is produced. Whether it's general (non-recyclable) waste, lightweight packaging, waste glass, paper, bulky waste or organic waste: transporting it away is a logistical feat.

Around 17,200 general waste bins are currently emptied on a regular basis. But if you separate your waste correctly, you demonstrably generate less waste and will be able to reduce your waste collection charges by a significant degree.

For household waste separation, the organic waste bin, blue bin for waste paper and the yellow bag or bin disposal are offered

free of charge. In addition, you can take your separated recyclable materials to 154 collection sites in Schwerin. Here, you will

also find containers for waste glass and old clothes. You can find the exact locations at sds-schwerin.de.



Yellow bins for packaging

Reducing the amount of waste and recovering recyclable materials are important contributions to the protection of the environment and conservation of the earth's resources. All sales packaging (lightweight packaging) is recorded here.

Lightweight packaging and yellow sacks
You can dispose of your lightweight packaging in yellow sacks/yellow bins and in the corresponding recyclable material collection containers.

What is lightweight packaging?

Packaging such as food cans, beverage cans, metal closures, aluminium trays, aluminium lids, aluminium foil, carrier bags, bags, wrapping film, bottles, cups, other plastic packaging, beverage and milk cartons, vacuum packaging made of composite materials, rinsing is not necessary.

What does not belong in the yellow sacks or in the yellow bins?

Glass, paper, cardboard packaging, any packaging with residual contents containing pollutants, Electrical goods, batteries and residual waste.

What do yellow sacks/bins cost?

Yellow sacks and yellow bins are available for free provided that household quantities are tendered.

Where can yellow bins be ordered?

Via a written order from the property owner to SDS, Eckdrift 43 - 45, 19061 Schwerin

Where are yellow sacks available from?

- SAS mbH, Ludwigsluster Chaussee 72
- Citizen's Office, Am Packhof 2 - 6, Town Hall
- Public utility company's customer centre, Mecklenburgstraße 1 and Eckdrift 43 - 45
- Recycling centres, see page 9 for addresses

When are the yellow sacks/yellow bins collected?

The yellow sacks/yellow bins must be ready for collection by 7:00 am at the latest on collection day. You can find the collection days for your street on the waste collection calendar from page 10 onwards. Bags of recyclable materials must be tied up and left in a clearly-visible place.

In the city centre, recyclable materials are collected via recycling containers or yellow bins.

Please note: yellow sacks which have been filled incorrectly will be left behind!

If something is put in the wrong bin, such as plastic parts or general waste, this has to be picked out again by hand. You can put your yellow bag out for collection again on the next collection day.



Recycling

The plastic content is extracted from the lightweight packaging collected in the Yellow Bag and Yellow Bin and then processed into a recyclate for reuse as plastic.

This plastic-based granulate serves as a source material for plastic products in the construction industry, traffic engineering, logistics and packaging technology and replaces the production of new plastics from primary materials like petroleum and coal.

PET plastic is primarily used for food packaging, particularly bottles, as well as foil or even textile fibres. PET recycling has achieved a high level of economic efficiency.

PET is sorted out of the waste using laser spectroscopy and processed under recycling code 01 for textile fibres, foil, thermoformed products and new bottles and containers.

Dispose of all packaging made from plastic and material composites in the yellow bag or yellow bin.

Who are the dual systems?

As of 2025, the following companies have been recognised

according to the packaging laws:

- Der Grüne Punkt – Duales System Deutschland GmbH
- BellandVision GmbH
- EKO-Punkt GmbH & Co. KG
- Interzero Recycling Alliance GmbH
- Landbell AG
- Noventiz Dual GmbH
- PreZero Dual GmbH
- Reclay Systems GmbH
- Recycling Dual GmbH
- Zentek GmbH & Co. KG



Bottles and waste glass

The collection containers for waste glass are located at the recycling centres in the city.

What counts as waste glass?

All glass packaging: bottles and other containers made from glass are separated into clear, green and brown glass and disposed of separately. Coloured glass, e.g. blue or red, belongs in the green glass container.

Please don't!



What does not belong in the glass container?

Window panes and other flat glass (construction waste), mirrors (residual waste), light-bulbs (residual waste), porcelain (residual waste), stoneware (residual waste), fluorescent tubes (problematic waste).

When are the glass containers emptied?

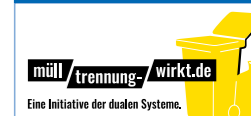
Waste glass containers are emptied every 14 days. This can be changed to weekly emptying, as required. If the container is frequently full, please let us know: Tel. (0385) 633 1671

What else should be considered?

To avoid noise pollution, the glass containers may only be used Monday to Saturday between the hours of 7:00 am and 7:00 pm. Please be considerate of local residents. No glass may be thrown in on Sundays or holidays or at night.



More information here:



www.muelltrennung-wirkt.de

Please note:

Do not leave waste glass, paper/boxes or residual waste next to the collection point.



Tips for recycling

- Shred or fold up big or bulky boxes before disposal.
- Buy and use recycled paper. Recycling paper saves water, energy and raw materials, and closes the materials cycle.
- Collecting and recycling waste glass is good. Using reusable bottles is better!
- Separate the metal and plastic closures from bottles and glass; they belong in the yellow sacks.



Blue bins for paper

There are currently two systems for collecting waste paper from households in the city: in the collection system, waste paper is collected close to your home in blue bins, which can be ordered in three sizes (120, 240 or 1,100 litres). Under the bring system, there are three cubic metre collection containers at selected recycling centres. Use the paper bins close to your home – they are convenient and free to use.

What counts as waste paper?

Newspapers, magazines, folded boxes, cardboard and other printed products

What does not count as waste paper?

Very dirty household paper (residual waste), greaseproof paper, wax paper and serviettes (residual waste), wallpaper (residual waste), tissue paper, tissues, nappies

(residual waste), photos and carbon paper (residual waste), paper heavily coated with plastic or metal (residual waste or recyclable materials), drinks and milk cartons (yellow sack), label backing paper (residual waste), film-coated paper and cardboard boxes (residual waste)

How often are the blue bins emptied?

They are emptied every four weeks. Blue bins must be ready for collection by 7:00 am on collection day. You can find the collection days for your street on the waste disposal calendar from page 10 onwards. The cubic metre collection containers are emptied at least once a week.

How much do blue bins cost?

No additional fee is charged for blue bins.

Please note:

Waste paper may not be contaminated. Bins which have not been correctly filled will not be emptied. Cardboard and waste paper next to the paper bin will not be taken away.

Please don't!



Where are blue bins available from?

Via a written order from the property owner to SDS Eckdrift 43 - 45, 19061 Schwerin

Disposing of Christmas trees

As well as the official collection points announced in the press, the worn-out Christmas trees must be placed neatly next to the household waste collection points in the large residential districts.

Festively decorated Christmas trees are part of the Christmas traditions in many households. But a few days after the celebrations, we start to take down our decorations and think about how to dispose of the tree. Here, you have the option of placing your tree at numerous collection points throughout the entire Schwerin city area between **5 January and 23 January 2026** for free collection by the disposal company. The exact collection points are published in good time on the website sds-schwerin.de as well as in the local press. You must remove decorations from the Christmas trees before disposing of them. They must not contain any remnants of decorations as they are to be composted.



Important: Worn-out Christmas trees must not be taken to the forest or to green spaces. Only the collection points published online or in the press may be used for disposal. Outside of the specified collection points, it cannot be guaranteed that your tree will be collected and disposed of. If you miss the specified disposal pe-

riod, the tree can be cut into smaller pieces and disposed of in your organic waste bin or via an organic waste bag approved by the city (see page 5). It is also possible to take your tree to one of the two recycling centres, where it will be accepted against payment. Read more about the recycling centres on page 9.

Brown bins for organic waste

Brown bins are used for collecting organic waste, which is then processed in a fermentation plant.

Schwerin is the first commune in Mecklenburg-Vorpommern to run a combined composting and organic waste fermentation facility.

What goes in the brown bins?

- Fruit and vegetable waste
- Coffee grounds and used teabags
- Spoiled food, eggshells
- Cut flowers and potted plants
- Green cuttings from trees, bushes and grass

- normal household quantities of cooked leftovers, meat, bones
- Small amounts of feathers, hair, hay and straw, as well as wood and sawdust

What doesn't go in the brown bins?

- Inorganic waste like **plastic bags**
- Litter for small animals, clumping litter
- Tree cuttings (heavy wood) and mortar
- **Compostable plastic bags for organic waste**

Where are brown bins available from?

Property owners can order one in writing from SDS, Eckdrift 43 - 45, 19061 Schwerin provided that at least one residual waste bin is available.

How often are the brown bins emptied?

They are emptied every two weeks. Brown bins must be ready for collection by 7:00 am on collection day. They are emptied weekly in large residential complexes. You can find the collection days for your street on the waste disposal calendar from page 10 onwards.

How much do brown bins cost?

No additional fee is charged for brown bins.

In what sizes are the organic waste bins available?

Brown bins can be ordered in sizes of 120 or 240 litres.

Facts about green waste and organic waste bags

What are the waste disposal options?

- Composting in your own garden,
- Taking it to the recycling centres,
- Using the city-approved organic waste bags. If you do this, up to 5 bags, from September to November up to 10 bags, can be added to the organic waste bin.

What are organic waste bags and where can I get them?

These paper bags have a capacity of 100 litres and have "Nur für Laub und Gartenabfälle" (Only for leaves and garden waste) printed on them. They are available from the recycling centres, SAS mbH, the citizen's centre in the town hall and the customer centres at the public utility companies.

What can I put in the organic waste bags?

Only green waste, leaves, parts of plants. Please only fill the bags up to a maximum of 20 kilograms so that the bags can be transported.

What compostable waste is accepted at the recycling centres?

Green waste, hedge trimmings, shrubs, leaves, grass cuttings.

What do organic waste bags cost?

1.50 euro per unit.

What is the delivery charge?

There are no additional fees for using the organic waste bags. The delivery of loose

green/organic waste costs 15.00 euros per cubic metre.

For the delivery of other bags (e.g. blue bags) 1.50 euro per unit (for a 100-litre volume per bag) is levied.

Please note:

Only the approved organic waste bags with the printed text "Nur für Laub und Gartenabfälle" will be collected and disposed of.



Organic waste from allotments

Garden waste, leaves, hedge trimmings and similar compostable materials in allotments may only be disposed of in organic waste sacks if they are taken to recycling centres. Leaving the sacks at recycling collection points or in someone else's organic waste bin is considered illegal waste disposal and will result in a fine. Allotment associations which are not yet connected with the public waste disposal system must use commercial facilities.



Do not burn green cuttings

Burning cuttings from trees and bushes is prohibited in Schwerin as there are enough alternatives for getting rid of your green cuttings and organic waste throughout the city.

Dry, untreated pieces of wood and cuttings from trees and bushes may only be burned as part of an Easter bonfire from Maundy Thursday until Easter Monday. If you wish to light an Easter bonfire please file a request at: Event management, Am Packhof 2-6, 19053 Schwerin.



Avoiding odours and fruit flies

In high temperatures, organic waste quickly starts to smell. Your own collection containers should therefore be emptied and cleaned regularly. It is not possible to replace the organic waste bin just because of dirt or smells. You can also find finely crushed rock in DIY shops which you can scatter over your waste to prevent unpleasant smells from the organic waste bin or compost heaps. This also keeps fruit flies away.

A good home for the brown bin

Of course, it is helpful when you place the organic waste bin in a shaded and protected place. If there is no such place available, modifications with or without greenery can provide shade and improve the view.

Tips for liquid and frost in the organic waste bin

You can place a layer of old newspaper in the organic waste bin to prevent excess liquid from gathering at its base. This absorbs the moisture. If damp organic waste ends up in the brown bin in winter, this can lead to this freezing to the base or wall of the bin, meaning that the bin cannot be completely emptied. Here, it is helpful to wrap this kitchen waste in newspaper.

Damp organic waste such as coffee filters should be dried out before disposal. Organic waste should always be disposed of after it has cooled down so that no condensation can form in the organic waste bin. It also helps to store the bin in a place protected from frost between collection days.

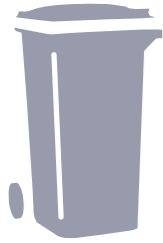
Please note:

Every user, and the user alone, is responsible for cleaning their organic waste bin.

Please note:

As a general rule, the pavements at or near the collection points must remain passable. Otherwise this becomes a road safety risk.





Grey bins for residual waste

The grey residual waste bins are there for all the rest of the waste which can no longer be salvaged due to contamination or mixing.

What counts as residual waste?

From folders to cigarette butts, we have compiled a clear table for you on page 24 which should help you with sorting. You'll find more information in our ABC of Waste on our website.

How much do grey bins cost?

The statute of household waste fees regulates the fee for grey residual waste bins.

Who can order or change orders for residual waste bins?

This can be done by the property owner or by a representative with the appropriate authorisation.

What size and how many grey bins do I need?

Each property should have at least one residual waste bin available. It must not be overflowing (it must be possible to close the lid). Waste must not be left next to the grey bins. A minimum residual waste container capacity of ten litres per resident and week must be available for residential properties.

What sizes/volumes are there?

Grey bins with capacities of 40, 80, 120, 240, 1,100 and 5,000 litres are in use in Schwerin.

What needs to be considered when setting up the bins?

Grey bins must always be set up on your own property.

What needs to be considered when it comes to emptying the bins?

Grey bins must be ready for collection by 7:00 am on collection day. You can find the collection days for your street on the waste disposal calendar from page 10 onwards.

Do you have any questions about the specific amount of your fee?

Give us a call on Tel. (0385) 633 16 76 or 72, 78 and 80



Please note:

Only residual waste sacks with a specific SAS label will be collected – and not other blue sacks.

SAS residual waste sacks
When you temporarily produce large volumes of waste, e.g. on holidays or when moving house, you can use the SAS residual waste sacks.

There is a fee of 3.29 Euros per sack.

You can get these residual waste sacks from the SAS customer service team: Ludwigsluster Chaussee 72 19061 Schwerin or in the Stadthaus

Tie up the sacks and leave them for collection next to the grey residual waste bins on the corresponding collection day for residual waste.

You'll find all the collection days at a glance, a reminder function and more on our waste collection calendar app:



Click here to register for bulky waste disposal on the SAS website.



Bulky waste disposal

What is bulky waste?

Bulky waste is made up of household items, which will not go in the residual waste bins due to their size or material quality. That means things like furniture, floor coverings, etc. It also includes electronic waste, fridges, freezers and boilers.

What does not count as bulky waste?

Used tires, wallpaper, materials from construction and renovation works, windows, doors, bathroom accessories, problematic waste. (see the table on p. 24)

What options are there for bulky waste disposal?

- Free annual collection by the SAS.
- Taking it to a recycling centre (please enquire about specific prices with the recycling centres directly, see page 9).

How much bulky waste is collected and how much does it cost?

Each household can dispose of up to 5 m³ of bulky waste for free per calendar year.



What should be considered when ordering?

You can register for bulky waste disposal through the bulky waste card, by fax or online with the order form at www.sas-schwerin.de. The processing time lasts about 4 weeks.

Important: the SAS confirms collection days.

What happens if I have more bulky waste?

Any additional amounts are to be arranged with the SAS and subject to a fee.



Waste collection fees – includes numerous services

The waste collection fees cover more than you would assume at first glance. The following services are included:

- Residual waste disposal
- Bulky waste disposal once a year
- Waste paper disposal
- Organic waste bin collection
- Operation of recycling centres
- Operation of mobile hazardous waste units
- Acceptance of green cuttings

The waste collection fee is made up of a basic fee and a service charge:

Basic fee: calculated according to the number of usage units.

This means residences, shops, workshops and business premises.

Service charge: this is derived from the number of containers and how often they are emptied. The amount charged is regulated in the statute on household waste fees.

Do you have any more questions on this topic? Give us a call on ☎ (0385) 633 16 72 -78 or 80.

Landeshauptstadt Schwerin
Der Oberbürgermeister
SDS - Stadtwirtschaftliche Dienstleistungen Schwerin,
Eigenbetrieb der Landeshauptstadt Schwerin

SDS - Postfach 16 02 06 - 19092 Schwerin

Frau Marie Mustermann
Goethestraße 200
19053 Schwerin

Stratenunterhaltung/
Abfallwirtschaft

Kundenservice
Hotline 0385 633-1427
Mo - Do 8 - 17 Uhr
Fr 8 - 15 Uhr
Fax 0385 633-1424
E-Mail kundenservice@swin.de

Kundenzentrum Esdrit 43 - 45
Mo, Di, Do 8 - 17 Uhr
Mi, Fr 8 - 14 Uhr

Kundenzentrum Mecklenburgstr. 1
Mo, Di, Do 9 - 13 und 14 - 18 Uhr
Mi, Fr 9 - 13 Uhr

Datum 19.01.2026

Gebührennummer 60175035
(Bitte bei Zahlungen und Rückfragen angeben)

Beschuldener VR 2500009524
Gebührenkonto Goethestraße 200

Sehr geehrte Damen und Herren,
aufgrund der Satzungen über die Hausmüllentsorgungsgebühren und über die Straßenreinigungsgebühren in der Landeshauptstadt Schwerin ergeht folgender Bescheid:

Für das Jahr 2023 werden die folgenden Gebühren festgesetzt:

Abfallentsorgung	Erhebungszeitraum	Berechnungsgrundlage	Anzahl	Betrag in EUR
Grundgebühr	01.01.2025 bis 31.12.2025	Benutzungseinheiten zu 60,16 €	3,0	180,48
	01.01.2025 bis 31.12.2025	120-l-Behälter wöchentlich zu 205,27 €	1,0	205,27
Zwischensumme				385,75
Straßenreinigung	01.01.2025 bis 31.12.2025	Reinigungsklasse 4 zu 3,98 €/Frontmeter Frontmeter Goethestraße	36,0	143,28
				143,28
Zwischensumme				528,03
Ihre Gebühren				528,03
Nebenforderungen				0,00
Gesamtforderungen				0,00

Die Gebühren werden einen Monat nach Bekanntgabe des Bescheides fällig, sofern nicht in vorausgegangen Bescheiden für Teilbeträge andere Fälligkeiten festgesetzt worden sind.

SDS - Stadtwirtschaftliche Dienstleistungen Schwerin, Eigenbetrieb der Landeshauptstadt Schwerin
Esdrit 43-45
19061 Schwerin
www.sds-schwerin.de
E-Mail: info@sds-schwerin.de

Sitz des Eigenbetriebes: Schwerin
Anteilsgericht Schwerin: RA-Nr. 2640
Werkstein: Ika Wilczek

Bankverbindung:
Hypo Vereinsbank
IBAN 0284 2003 0000 0019 0044 99
BIC HYVDE33HAN300

Seite 1 von 2

17,000 fee notices
Every year, around 17,000 fee notices for waste disposal and street cleaning are sent out at the end of January, and the trend is rising. On the front you will find the final statement for the previous year, i.e.

what has already been paid and whether there are any back payments, e.g. for example due to a change to a larger residual waste bin. The reverse side shows the fees and the dates for the advance payments in the new year.

If the SDS does not have a direct debit authorisation, you will still receive a form for issuing a direct debit with the fee notice. This means that payment deadlines can no longer be missed. It is important to note that the direct debit authorisation must be signed by hand.

If, when reading your fee notice, you realise that your customer data is no longer up to date, please inform us in writing, including any changes in ownership. Please use our e-mail address abfall@sds-schwerin.de.

Digital waste management 2.0 – general waste and paper bins will be chipped in 2026

The services for collecting general waste and waste paper bins were reorganised after the existing contract expired. The previous service provider is also the new contract partner. When SAS mbH were newly awarded the waste disposal service contract for household waste, bulky waste, and waste paper until 1 June 2026, the retrofitting of containers with transponder chips was also part of the contract.

This will make it easier to allocate the containers to the relevant properties, which means that your containers will, for example, not be mixed up with those of your neighbours in future. The chips record the emptying of the containers. This allows us to track precisely whether and which general waste bin or waste paper bin has been

emptied on the collection day. If there are questions regarding the emptying of bins, we can provide information more quickly and give more comprehensive answers. The retrofitting is planned for spring 2026. For everything to run smoothly, please observe the following information. Letters will be sent to all households in good time beforehand. They will inform you about the exact time that your container will be fitted with the chip. Observe the key information about putting out your bin and remember to put all bins out on the day, even if they are not quite full. Identification stickers will be enclosed with this letter so that each household can label their containers beforehand. This will allow for the containers to be allocated to the correct property. Please remember to put all bins out on the day, even if they are not quite full. **Thank you in advance for your cooperation.**



Please note:

Do not leave your bulky waste on the side of the road until the morning of your collection day.



Separated collection and disposal of construction waste

Construction and demolition waste accounts for well over half of all waste generated. Making more intensive use of the recyclable materials it contains can make a significant contribution to protecting natural resources. ürlicher Ressourcen geleistet werden.

Most of the waste is recycled to a high standard or reused in other ways. To achieve this, construction and demolition waste must be properly separated. As a rule, a separate container must be provided for each type of waste. The collection container should be selected in consultation with the contracted waste disposal company to ensure cost-effective disposal options. Small containers are a good alternative, especially on cramped inner-city construction sites. If you do not pre-sort the construction waste yourself, it may be classified as mixed construction waste in

some cases. The waste disposal company will then sort the waste, which leads to significantly higher costs.

What is construction waste?

Construction waste is the umbrella term for all waste generated on a construction site. This is generally divided into the areas of mineral construction rubble with no harmful contaminants e.g. concrete, bricks, tiles, ceramics; non-mineral waste e.g. packaging, metals, wood, glass, gypsum; and other materials. Harmful construction and demolition waste must always be kept separated and taken for proper recycling or removal.

A vast amount of waste from construction and demolition measures are processed as recycled materials and reused by incorporating them into technical structures. These processed materials offer an environmentally

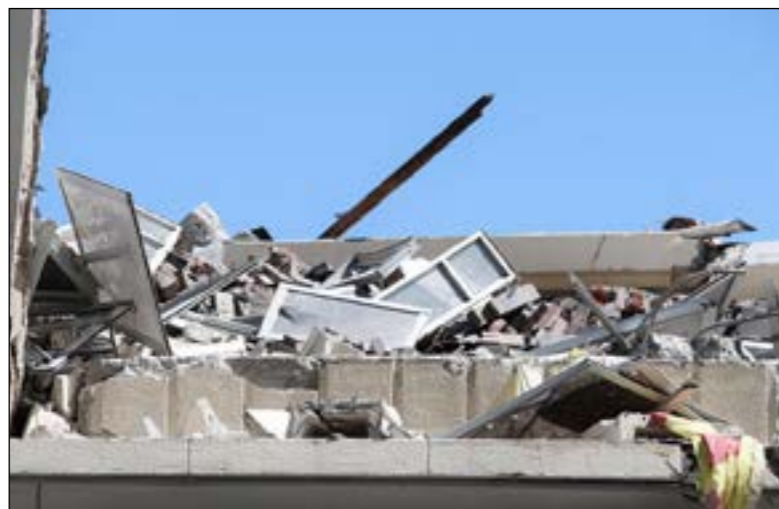
friendly alternative to primary construction materials and contribute to a circular economy. For instance, residues of concrete structures can be used again as an aggregate in road construction.

Caution: asbestos

The disposal of building rubble containing asbestos is particularly challenging. Even though asbestos has been prohibited as a construction material in Germany since 1993, this material is still often found in old buildings. It must in no way be damaged or destroyed, as the released fibres can have a highly carcinogenic effect when inhaled. It must be disposed of in special containers or stable big bags. It is also very important to wear suitable protective equipment including respiratory protection while working.

The following fractions must be collected separately:

1. Glass (17 02 02),
2. Plastic (17 02 03),
3. Metals (17 04 01 to 17 04 07 and 17 04 11),
4. Wood (17 02 01),
5. Insulation materials (17 06 04),
6. Bituminous mixtures (17 03 02),
7. Gypsum-based construction materials (17 08 02),
8. Concrete (17 01 01),
9. Bricks (17 01 02) and
10. Tiles and ceramics (17 01 03)



Our tip!

Keep construction waste separated at the place it was generated in order to save costs.

Please note:

Construction waste does not go in the grey bin. Stones and larger concrete chunks can cause significant damage in the waste collection vehicle and sorting facilities. Stones do not go in the organic waste bin; they cannot be composted.

Construction waste also does not belong with bulky waste!

Instead, contact a certified waste disposal company. If it is a manageable household amount, you can also take construction waste to the recycling centre directly.



The Blue Angel for building products, such as: floor coverings, sealants, low-emission materials for indoor use, external wall insulation systems, varnish and paints

Construction waste is not part of the obligatory tasks of the municipal waste disposal service.

The recyclability of construction and demolition waste is to be improved, in particular by way of comprehensive obligations for separated collection and by expanding the labelling obligation of the containers.

Please note:

The amended Commercial Waste Ordinance (Gewerbeabfallverordnung) is due to enter into force on 1 July 2026.

Recycling centres in Schwerin

Alba Nord GmbH and SAS Schweriner Abfallentsorgungs- und Straßenreinigungsgesellschaft mbH are competent and reliable partners of the state capital Schwerin.

It is free for private households to use recycling centres in the city of Schwerin. Tradesmen in the city and private households in the districts can use the service for a fee. Photovoltaic elements can be delivered to the Recycling centre north (Ziegeleiweg 12, 19057 Schwerin).

Costs:

It is free of charge to dispose of used batteries, electrical items, problem waste and scrap.

Find out the price of disposing of bulky waste, household waste, green cuttings, etc. from the recycling centres.

Operator: ALBA Nord GmbH

Ziegeleiweg 12
19057 Schwerin

Tel.:
(0385) 48 11 0

Fax:
(0385) 48 43 098



Recycling centre north

Lankow: Ziegeleiweg 12, 19057 Schwerin

Tel.:
(0385) 48 07 80 47

Opening hours:
Mon. to Fri. 9:00 am - 7:00 pm, Sat. 8:00 am - 1:00 pm

Operator: SAS mbH

Ludwigsluster Chaussee 72
19061 Schwerin

Tel.:
(0385) 57 70 0

Fax:
(0385) 57 70 222



Recycling centre south

Ludwigsluster Chaussee 72

Tel.:
(0385) 57 70 250

Opening hours:
Mon. to Fri. 9:00 am - 7:00 pm, Sat. 8:00 am - 1:00 pm

On behalf of the
State Capital Schwerin



At both communal recycling centres, the following scope of services is available for you:

You can drop off:

- Bulky waste
- Green waste
- Electrical items
- Scrap metal
- Waste paper
- Waste glass
- Lightweight packaging
- Plastic waste
- Used batteries
- Empty ink/toner cartridges
- Old clothes
- CDs/DVDs/disks
- Problem household waste
- Household waste (only in SAS bags)

Further services:

- Organic waste bags for purchase
- Yellow bags free of charge

Special waste & problem waste

can be taken to the recycling centres free of charge.

This includes, for instance:

- Batteries
- Energy-saving lights
- Cleaning agents
- Emulsion paints (liquid state)
- Methylated spirits / fire lighters
- Insecticides/pesticides
- Plant protection products and weedkillers
- Wood preservatives

Disposal of these types of waste via household waste bins is prohibited.

The Schadstoffmobil (harmful substances vehicle) is also available for disposal. The Schadstoffmobil dates are published in good time on sds.schwerin.de.

You can find more information on page 26 under "What can be disposed of where?" or on our website.

Please note:

Find more information on this topic online at www.sds-schwerin.de

Instructions: First, take a look at the street directory to find out which district your street is part of. Then use the waste disposal plan to figure out what is being collected when.

A Achter de Wisch	Krebsförden II
Achterstieg	Wickendorf
Adam-Scharrer-Weg	Ostorf
Adolf-Wilbrandt-Str.	Weststadt III
Ahornstr.	Lankow I
Ahornweg	Warnitz
Ahrenshooper Ring	Lankow I
Alexander-Behm-Str.	Wüstmark II
Alexander-von-Humboldt-Str.	Mueßer Holz
Alexandrinenstr.	Paulsstadt III
Alt Meteler Str.	Friedrichsthal I
Alte Bäckerei	Lankow III
Alte Crivitzer Landstr.	Mueß
Alte Dorfstr.	Zippendorf
Alte Gärtnerei	Warnitz
Alter Garten	Altstadt I
Alter Holzweg	Krebsförden II
Alte Waisenstiftung	Werdervorstadt II
Am Bahnhof	Friedrichsthal I
Am Dom	Altstadt I
Am Erlenbruch	Görries I
Am Fasanenhof	Görries II
Am Friedensberg	Lewenberg II
Am Grünen Tal	Großer Dreesch
Am Güstrower Tor	Werdervorstadt I
Am Hang	Zippendorf
Am Heidberg	Görries II
Am Heidensee	Werdervorstadt II
Am Hexenberg	Zippendorf
Am Immensoll	Neumühle II
Am Kaspelwerder	Görries I
Am Kleinen Soll	Neumühle I
Am Krebsbach	Krebsförden II
Am Kreuzweg	Gartenstadt I
Am Leuschenberg	Neumühle I
Am Margaretenhof	Warnitz
Am Markt	Altstadt I
Am Neumühler See	Lankow I
Am Packhof	Paulsstadt III
Am Püsserkrug	Gartenstadt I
Am Silbernen Hang	Mueß
Am Störtal	Mueß
Am Strand	Zippendorf
Am Tannenhof	Ostorf
Am Tannenkamp	Friedrichsthal I
Am Teich	Wüstmark I
Am Treppenberg	Neumühle I
Am Wald	Krebsförden II
Am Wasserturm	Neumühle II
Am Werder	Werdervorstadt II
Am Winkel	Krebsförden I
Am Wochenend	Friedrichsthal I
Ammersweg	Neumühle I
Amselweg	Neumühle I
Amtstr. 1 and 3, 2-10	Schelfstadt II
Amtstr. 9-39, 14-42	Werdervorstadt II
An den Wadehängen	Neumühle I

An der Bahn	Warnitz
An der Chaussee	Medewege
An der Crivitzer Chaussee	
1-61 (odd numbers only)	Zippendorf
2-16 (even numbers only)	Großer Dreesch
20-62A (even numbers only)	Zippendorf
An der Hollenbäk	Görries II
Andrej-Sacharow-Str.	Großer Dreesch
Anklamer Str.	Lankow I
Ann-Charlott-Settgast-Str.	Werdervorstadt I
Anne-Frank-Str.	Großer Dreesch
Anthony-Fokker-Str.	Görries II
Apothekerstr.	Schelfstadt I
Arno-Esch-Str.	Großer Dreesch
Arsenalstr.	
5-27 (odd numbers only)	Paulsstadt III
2-38 (even numbers only)	Altstadt I
Auf dem Dwang	Görries I
Auf dem Sande	Krebsförden II
August-Bebel-Str.	Schelfstadt I
August-Horch-Str.	Wüstmark II
Ausbau	Wickendorf
B Bäckerstr.	Paulsstadt I
Baderstr.	Altstadt I
Bahnhofstr.	Warnitz
Barcastr.	Werdervorstadt II
Barlower Weg	Krebsförden I
Barther Str.	Lankow I
Baustr.	Görries II
Beethovenstr.	Paulsstadt I
Bendhofer Weg	Friedrichsthal II
Benno-Voelkner-Str.	Krebsförden II
Bergstr.	Schelfstadt II
Berliner Platz	Neu Zippendorf
Bernhard-Schwentner-Str.	Großer Dreesch
Bertha-Klingberg-Platz	Ostorf
Bertha-von-Suttner-Str.	Großer Dreesch
Bertolt-Brecht-Str.	Weststadt I
Birkenstr.	Warnitz
Birkenweg	Friedrichsthal I
Bischofstr.	Altstadt I
Bleicherstr.	Feldstadt II
Bleicherufer	Feldstadt I
Blumenbrink	Gartenstadt II
Bökener Weg	Friedrichsthal I
Bornhövedstr.	Werdervorstadt II
Bornkamp	Lankow III
Bosselmannstr. 2-17	Zippendorf
Bosselmannstr. 20	Neu Zippendorf
Breite Str.	Görries I
Bremsweg	Lankow I
Brigitte-Reimann-Str.	Werdervorstadt I
Brink	Gartenstadt I
Brook	Lankow III
Brunnenstr.	Feldstadt I
Brüsewitzer Str.	Friedrichsthal I
Buchenweg	Werdervorstadt I

Buchholzallee	Gartenstadt I
Büdnerstr.	Lankow III
Bürgelstr.	Mueßer Holz
Bürgermeister-Bade-Platz 1-5	Lewenberg I
Bürgermeister-Bade-Platz 8-9	Paulsstadt III
Burgseestr.	Ostorf
Burgstr.	
1-19 (odd numbers only)	Altstadt I
2-10 (even numbers only)	Schelfstadt II
12-40 (even numbers only)	Altstadt I
Buschstr.	Altstadt II
Carl-Friedrich-Flemming-Str.	Krebsförden II
Carl-Malchin-Str.	Krebsförden II
Carl-Moltmann-Str.	Weststadt I
Carlshöhe	Wickendorf
Carl-Tackert-Str.	Göhrener Tannen
Carl-von-Linde-Str.	Wüstmark II
Clara-Zetkin-Str.	Weststadt II
Consrader Weg	Mueß
Cottbuser Str.	Neu Zippendorf
Cramoner Weg	Friedrichsthal II
Daheim	Neumühle II
Dalberger Weg	Friedrichsthal I
Demmlerplatz	Paulsstadt I
Demmlerstr.	Feldstadt II
Die Aussicht	Neumühle II
Dohlenweg	Neumühle III
Domhof	Altstadt I
Domstr.	Altstadt I
Dorfstr.	Krebsförden I
Dr.-Georg-Benjamin-Str.	Lewenberg II
Dr.-Hans-Wolf-Str.	Lewenberg I
Dr.-Joseph-Herzfeld-Str.	Lankow II
Dr.-Külz-Str.	Paulsstadt IV
Dr.-Martin-Luther-King-Str.	Großer Dreesch
Draguner Weg	Friedrichsthal II
Dreescher Markt	Großer Dreesch
Drieberger Weg	Friedrichsthal II
Drosselstr.	Neumühle II
Drosselweg	Werdervorstadt I
Eckdrift	Krebsförden II
Edgar-Bennert-Str.	Lankow II
Edith-Lindenberg-Str.	Werdervorstadt I
Egon-Erwin-Kisch-Str.	Großer Dreesch
Eichenstr.	Lankow I
Eichenweg	Werdervorstadt I
Einsteinstr.	Mueßer Holz
Eisenbahnstr.	Feldstadt I
Ekhofplatz	Altstadt I
Ellerried	Krebsförden II
Enge Str. 1	Altstadt I
Enge Str. 2	Altstadt I
Enge Str. 3	Altstadt II
Erich-Weinert-Str.	Weststadt I
Ernst-Alban-Weg	Krebsförden II
Ernst-Barlach-Str.	Werdervorstadt I
Ernst-Moritz-Arndt-Str.	Weststadt I

Eschenstr.	Lankow I
Eschenweg	Warnitz
Eugen-Langen-Str.	Wüstmark II
Eulerstr.	Mueßer Holz
Eutiner Str.	Lankow II
F Fährweg	Göhrener Tannen
Falkenhorst	Neumühle I
Farmweg	Zippendorf
Fasanenstr.	Neumühle II
Feldstr.	Feldstadt I
Ferdinand-Schultz-Str.	Werdervorstadt II
Fichtestr.	Mueßer Holz
Finkenweg	Neumühle II
Fischerstr.	Schelfstadt II
Flensburger Str.	Lankow II
Försterweg	Zippendorf
Forstweg	Warnitz
Frankenhorst	Wickendorf
Franz-Mehring-Str.	Paulsstadt III
Franzosenweg	Ostorf
Friedensstr.	Paulsstadt I
Friedrich-Engels-Str.	Großer Dreesch
Friedrich-Paschen-Str.	Göhrener Tannen
Friedrich-Schlie-Str.	Krebsförden II
Friedrichstr.	
1-17 (odd numbers only)	Altstadt I
2-24 (even numbers only)	Schelfstadt I
Friedrich-Wilhelm-Platz	Mueß
Friesenstr.	Weststadt I
Fritz-Reuter-Str.	Paulsstadt II
Fuchsberg	Neumühle I
G Gadebuscher Str.	
111-271 (odd numbers only)	Lankow I
110A-184 (even numbers only)	Lankow II
250-270A (even numbers only)	Lankow I
Gagarinstr.	Mueßer Holz
Galileo-Galilei-Str.	Mueßer Holz
Gartenhöhe	Feldstadt I
Gartenstr.	Feldstadt I
Gartenweg	Friedrichsthal I
Gärtnereiweg	Friedrichsthal I
Gaußstr.	Schelfstadt I
Geibelstr.	Lewenberg I
Georg-Simon-Ohm-Str.	Mueßer Holz
Gerhart-Hauptmann-Str.	Paulsstadt IV
Gertrudenhof	Wickendorf
Geschwister-Scholl-Str.	Altstadt II
Gimpelweg	Neumühle III
Ginsterweg	Friedrichsthal I
Girlitzweg	Neumühle III
Glaisinstr.	Altstadt I
Goethestr.	
1-57 (odd numbers only)	Feldstadt I
61-105 (odd numbers only)	Altstadt II
2-52 (even numbers only)	Feldstadt I
54-92 (even numbers only)	Altstadt II
Goldburg	Wickendorf
Görrieser Weg	Krebsförden I
Goswinkel	Lankow I
Goswinkler Weg	Weststadt III

Grabenstr.	Krebsförden II
Graf-Schack-Allee 1-10	Altstadt II
Graf-Schack-Allee 10A-20	Feldstadt I
Graf-Yorck-Str.	Großer Dreesch
Greifswalder Str.	Lankow I
Grevenhäger Weg	Friedrichsthal II
Grevesmühlener Chaussee	Warnitz
Grevesmühlener Str.	Lankow II
Große Wasserstr.	Feldstadt I
Großer Kamp	Warnitz
Großer Moor	Altstadt I
Grüne Str.	
1-23 (odd numbers only)	Altstadt I
2-10 (even numbers only)	Altstadt I
12-40 (even numbers only)	Schelfstadt II
Grunthalplatz	Paulsstadt III
Güstrower Str.	Werdervorstadt I
Gutenbergstr.	Großer Dreesch
Güterbahnhofstr.	Weststadt III
H Hafnpromenade	Werdervorstadt I
Habichtweg	Neumühle I
Hafenstr.	Werdervorstadt I
Hagenower Chaussee 1-1B	Gartenstadt I
Hagenower Chaussee 2-39	Krebsförden II
Hagenower Str.	Gartenstadt I
Hamburger Allee 1-74	Neu Zippendorf
Hamburger Allee 76-240	Mueßer Holz
Handelsstr.	Görries II
Händelstr.	Werdervorstadt II
Hänflingsweg	Neumühle III
Hansestr.	Werdervorstadt I
Hans-Fallada-Str.	Weststadt I
Haselholzstr.	Gartenstadt I
Haselnußstr.	Lankow I
Hauptstr.	Medewege
Heckenrosenweg	Friedrichsthal I
Hegelstr.	Mueßer Holz
Heidehorst	Gartenstadt II
Heimweg	Friedrichsthal I
Heinrich-Heine-Str.	Paulsstadt I
Heinrich-Hertz-Ring	Wüstmark II
Heinrich-Mann-Str.	
1-21 (odd numbers only)	Feldstadt I
2-18 (even numbers only)	Altstadt II
Heinrich-Seidel-Str.	Lewenberg I
Heisterbusch	Neumühle I
Helenenstr.	Altstadt II
Hellborn	Friedrichsthal I
Henningshof	Wickendorf
Hermannstr.	Feldstadt I
Herrengabenweg	Krebsförden I
Herrensteinfelder Weg	Friedrichsthal I
Hinter der Schmiede	Krebsförden I
Hof Göhren	Krebsförden II
Hofkoppel	Krebsförden II
Holunderweg	Friedrichsthal I
Holzhafen	Werdervorstadt I
Holzshof	Werdervorstadt I
Hopfenbruchweg	Weststadt III
Hopfenbruchwiese	Lankow III

Hospitalstr.	
1-9 (odd numbers only)	Werdervorstadt II
11-23 (odd numbers only)	Schelfstadt II
2-16 (even numbers only)	Werdervorstadt II
18-30 (even numbers only)	Schelfstadt II
Hubertusstr.	Lankow I
Hufenweg	Zippendorf
Hundorfer Weg	Wickendorf
Husumer Str.	Lankow II
Ida-Masius-Str.	Werdervorstadt I
Im grünen Feld	Wickendorf
Immengang	Krebsförden II
Jahnstr.	Schelfstadt II
Jägerweg	Ostorf
Jean-Sibelius-Str.	Weststadt II
Johannes-Brahms-Str.	Weststadt I
Johannes-Gillhoff-Str.	Krebsförden II
Johannes-R.-Becher-Str.	Weststadt I
Johannes-Stelling-Str.	Ostorf
Johannesstr.	Paulsstadt I
John-Brinckman-Str.	Lewenberg I
Joseph-Haydn-Str.	Werdervorstadt II
Julius-Polentz-Str.	Lankow II
Jungfernstieg	Paulsstadt I
Justus-von-Liebig-Str.	Mueßer Holz
Kalkwerderring	Ostorf
Kaninchenwerder	Mueß
Kantstr.	Mueßer Holz
Kühls Acker	Krebsförden I
Karl-Kleinschmidt-Str.	Krebsförden II
Karl-Liebkecht-Platz	Feldstadt I
Karl-Marx-Allee	Großer Dreesch
Kastanienstr.	Lankow I
Käthe-Kollwitz-Str.	Werdervorstadt I
Kehrwieder	Feldstadt I
Keplerplatz	Mueßer Holz
Keplerstr.	Mueßer Holz
Kiebitzwinkel	Neumühle I
Kieferneck	Wüstmark II
Kieler Str.	Lankow II
Kirchenstr.	Schelfstadt II
Kirchenweg	Lankow IV
Kirchstieg	Wickendorf
Kirschenhöfer Weg	Warnitz
Kleiberweg	Neumühle III
Klein Medewege	Medewege
Kleine Wasserstr.	Feldstadt I
Kleiner Kamp	Warnitz
Kleiner Moor	Altstadt I
Klöresgang	Altstadt I
Klosterstr.	Altstadt II
Knautstr. 1-1A	Werdervorstadt II
Knautstr. 2-28	Schelfstadt II
Knautstr. 31	Lewenberg I
Knöchernhorst	Görries II
Komarowstr.	Mueßer Holz
Kopernikusstr.	Mueßer Holz
Körnerstr.	Schelfstadt I
Kranichstr.	Neumühle II

District Main collection day(s)	Type of waste/recycling	Collection cycle	Collection days
ALTSTADT I Monday	Household waste	Every 4 weeks	Mon., week 4, 8, 12, ...
		Every 14 days	Mon., even weeks
		1 x per week	Mon.
		2 x per week	Mon., Thurs.
ALTSTADT II Monday	Household waste	Every 4 weeks	Mon., week 4, 8, 12, ...
		Every 14 days	Mon., odd weeks
		1 x per week	Mon.
		2 x per week	Mon., Thurs.
FELDSTADT I Thursday	Household waste	Every 4 weeks	Thurs., week 1, 5, 9, ...
		Every 14 days	Thurs., even weeks
		1 x per week	Thurs.
		2 x per week	Mon., Thurs.
FELDSTADT II Thursday	Household waste	Every 4 weeks	Thurs., week 1, 5, 9, ...
		Every 14 days	Thurs., odd weeks
		1 x per week	Thurs.
		2 x per week	Mon., Thurs.
FRIEDRICHSTHAL I Wednesday	Household waste	Every 4 weeks	Wed., week 1, 5, 9, ...
		Every 14 days	Wed., odd weeks
		1 x per week	Wed.
		2 x per week	Mon., Thurs.
FRIEDRICHSTHAL II Tuesday	Household waste	Every 4 weeks	Tues., week 3, 7, 11, ...
		Every 14 days	Tues., odd weeks
		1 x per week	Tues.
		2 x per week	Mon., Thurs.
GÖHRENER TANNEN Monday	Household waste	Every 4 weeks	Mon., week 2, 6, 10, ...
		Every 14 days	Mon., even weeks
		1 x per week	Mon.
		2 x per week	Mon., Thurs.
GÖRRIES I Monday	Household waste	Every 4 weeks	Mon., week 2, 6, 10, ...
		Every 14 days	Mon., even weeks
		1 x per week	Mon.
		2 x per week	Mon., Thurs.
GÖRRIES II Monday	Household waste	Every 4 weeks	Mon., week 4, 8, 12, ...
		Every 14 days	Mon., odd weeks
		1 x per week	Mon.
		2 x per week	Mon., Thurs.
GRÖßER DREESCH Thursday	Household waste	Every 4 weeks	Thurs., week 3, 7, 11, ...
		Every 14 days	Thurs., even weeks
		1 x per week	Thurs.
		2 x per week	Mon., Thurs.
GARTENSTADT I Monday	Household waste	Every 4 weeks	Mon., week 2, 6, 10, ...
		Every 14 days	Mon., even weeks
		1 x per week	Mon.
		2 x per week	Mon., Thurs.
GARTENSTADT II Monday	Household waste	Every 4 weeks	Mon., on week 2, 6, 10, ...
		Every 14 days	Mon., on even weeks
		1 x per week	Mon.
		2 x per week	Mon., Thurs.
KREBSFÖRDEN I Thursday	Household waste	Every 4 weeks	Thurs., week 1, 5, 9, ...
		Every 14 days	Thurs., even weeks
		1 x per week	Thurs.
		2 x per week	Mon., Thurs.
KREBSFÖRDEN II Thursday	Household waste	Every 4 weeks	Thurs., week 3, 7, 11, ...
		Every 14 days	Thurs., odd weeks
		1 x per week	Thurs.
		2 x per week	Mon., Thurs.

LANKOW I Friday	Household waste	Every 4 weeks	Fri., week 2, 6, 10, ...
		Every 14 days	Fri., even weeks
		1 x per week	Fri.
		2 x per week	Tues., Fri.
LANKOW II Friday/Tuesday	Household waste	Every 4 weeks	Fri., week 3, 7, 11, ...
		Every 14 days	Fri., odd weeks
		1 x per week	Tues.
		2 x per week	Tues., Fri.
LANKOW III Friday/Tuesday	Household waste	Every 4 weeks	Tues., week 3, 7, 11, ...
		Every 14 days	Tues., odd weeks
		1 x per week	Tues.
		2 x per week	Tues., Fri.
LANKOW IV Tuesday	Household waste	Every 4 weeks	Tues., week 2, 6, 10, ...
		Every 14 days	Tues., even weeks
		1 x per week	Tues.
		2 x per week	Tues., Fri.
LEWENBERG I Friday	Household waste	Every 4 weeks	Fri., week 3, 7, 11, ...
		Every 14 days	Fri., even weeks
		1 x per week	Fri.
		2 x per week	Fri., week 3, 7, 11, ...
LEWENBERG II Friday	Household waste	Every 4 weeks	Fri., week 3, 7, 11, ...
		Every 14 days	Fri., odd weeks
		1 x per week	Fri.
		2 x per week	Fri., week 3, 7, 11, ...
MEDEWEGE Thursday	Household waste	Every 4 weeks	Thurs., week 1, 5, 9, ...
		Every 14 days	Thurs., even weeks
		1 x per week	Thurs.
		2 x per week	Thurs., Fri.
MUEB Tuesday	Household waste	Every 4 weeks	Tues., week 1, 5, 9, ...
		Every 14 days	Tues., odd weeks
		1 x per week	Tues.
		2 x per week	Tues., Fri.
MUEBER HOLZ Wednesday	Household waste	Every 4 weeks	Wed., week 4, 8, 12, ...
		Every 14 days	Wed., even weeks
		1 x per week	Wed.
		2 x per week	Tues., Fri.
NEU ZIPPENDORF Friday	Household waste	Every 4 weeks	Fri., week 3, 7, 11, ...
		Every 14 days	Fri., odd weeks
		1 x per week	Fri.
		2 x per week	Tues., Fri.
NEUMÜHLE I Wednesday	Household waste	Every 4 weeks	Wed., week 4, 8, 12, ...
		Every 14 days	Wed., even weeks
		1 x per week	Wed.
		2 x per week	Wed., on week 4, 8, 12, ...
NEUMÜHLE II Wednesday Tuesday	Household waste	Every 4 weeks	Wed., week 4, 8, 12, ...
		Every 14 days	Wed., on even weeks
		1 x per week	Wed.
		2 x per week	Wed., on week 4, 8, 12, ...
NEUMÜHLE III Wednesday	Household waste	Every 4 weeks	Wed., week 1, 5, 9, ...
		Every 14 days	Wed., odd weeks
		1 x per week	Wed.
		2 x per week	Wed., week 4, 8, 12, ...
OSTORF Monday	Household waste	Every 4 weeks	Mon., week 3, 7, 11, ...
		Every 14 days	Mon., odd weeks
		1 x per week	Mon.
		2 x per week	Mon., week 3, 7, 11, ...
PAULSSTADT I Wednesday	Household waste	Every 4 weeks	Wed., week 4, 8, 12, ...
		Every 14 days	Wed., even weeks
		1 x per week	Wed.
		2 x per week	Wed., week 3, 7, 11, ...

District Main collection day(s)	Type of waste/recycling	Collection cycle	Collection days
PAULSSTADT II Wednesday	Household waste	Every 4 weeks	Wed., week 1, 5, 9, ...
		Every 14 days	Wed., odd weeks
		1 x per week	Wed.
		2 x per week	Wed., week 3, 7, 11, ...
PAULSSTADT III Friday	Household waste	Every 4 weeks	Fri., week 4, 8, 12, ...
		Every 14 days	Fri., even weeks
		1 x per week	Fri.
		2 x per week	Fri., week 2, 6, 10, ...
PAULSSTADT IV Friday	Household waste	Every 4 weeks	Fri., week 1, 5, 9, ...
		Every 14 days	Fri., odd weeks
		1 x per week	Fri.
		2 x per week	Tues., Fri.
SACKTANNEN Wednesday	Household waste	Every 4 weeks	Wed., week 4, 8, 12, ...
		Every 14 days	Wed., even weeks
		1 x per week	Wed.
		2 x per week	Wed., week 2, 6, 10, ...
SCHELFSTADT I Wednesday	Household waste	Every 4 weeks	Wed., week 2, 6, 10, ...
		Every 14 days	Wed., even weeks
		1 x per week	Wed.
		2 x per week	Wed., week 2, 6, 10, ...
SCHELFSTADT II Wednesday	Household waste	Every 4 weeks	Wed., week 2, 6, 10, ...
		Every 14 days	Wed., odd weeks
		1 x per week	Wed.
		2 x per week	Wed., week 2, 6, 10, ...
WARNITZ Thursday	Household waste	Every 4 weeks	Thurs., week 2, 6, 10, ...
		Every 14 days	Thurs., even weeks
		1 x per week	Thurs.
		2 x per week	Thurs., week 2, 6, 10, ...
WERDERVORSTADT I Tuesday	Household waste	Every 4 weeks	Tues., week 2, 6, 10, ...
		Every 14 days	Tues., even weeks
		1 x per week	Tues.
		2 x per week	Tues., week 2, 6, 10, ...

WERDERVORSTADT II Tuesday	Household waste	Every 4 weeks	Tues., week 2, 6, 10, ...
		Every 14 days	Tues., odd weeks
		1 x per week	Tues.
		2 x per week	Tues., week 2, 6, 10, ...
WESTSTADT I Monday	Household waste	Every 4 weeks	Mon., week 2, 6, 10, ...
		Every 14 days	Mon., even weeks
		1 x per week	Mon.
		2 x per week	Mon., Thurs.
WESTSTADT II Tuesday	Household waste	Every 4 weeks	Tues., week 4, 8, 12, ...
		Every 14 days	Tues., even weeks
		1 x per week	Tues.
		2 x per week	Tues., Fri.
WESTSTADT III Friday	Household waste	Every 4 weeks	Fri., week 2, 6, 10, ...
		Every 14 days	Fri., even weeks
		1 x per week	Fri.
		2 x per week	Tues., Fri.
WICKENDORF Thursday	Household waste	Every 4 weeks	Thurs., week 1, 5, 9, ...
		Every 14 days	Thurs., odd weeks
		1 x per week	Thurs.
		2 x per week	Thurs., week 1, 5, 9, ...
WÜSTMARK I Thursday	Household waste	Every 4 weeks	Thurs., week 2, 6, 10, ...
		Every 14 days	Thurs., even weeks
		1 x per week	Thurs.
		2 x per week	Thurs., week 4, 8, 12, ...
WÜSTMARK II Thursday	Household waste	Every 4 weeks	Thurs., week 1, 5, 9, ...
		Every 14 days	Thurs., odd weeks
		1 x per week	Thurs.
		2 x per week	Thurs., week 4, 8, 12, ...
ZIPPENDORF Tuesday	Household waste	Every 4 weeks	Tues., week 3, 7, 11, ...
		Every 14 days	Tues., even weeks
		1 x per week	Tues.
		2 x per week	Tues., week 4, 8, 12, ...

Waste disposal on public holidays in 2026

You can also use the online waste collection calendar or our Abfallkalender (refuse collection calendar) app. It is possible to receive a reminder for all the dates. The calendar can be printed out.

Subject to changes

Public holiday	Public holiday		Waste disposal day for the public holiday		Subsequent delay of regular waste collection days							
	Weekday	Date	Weekday	Date	Weekday	Date	Weekday	Date	Weekday	Date	Weekday	Date
New Year's Day	Thursday	01/01/2026	Friday	02/01/2026	Saturday	03/01/2026						
International Women's Day	Sunday	08/03/2026	No delay of waste collection days									
Good Friday	Friday	03/04/2026	Saturday	04/04/2026								
Easter Monday	Monday	06/04/2026	Tuesday	07/04/2026	Wednesday	08/04/2026	Thursday	09/04/2026	Friday	10/04/2026	Saturday	11/04/2026
International Workers' Day	Friday	01/05/2026	Saturday	02/05/2026								
Ascension Day	Thursday	14/05/2026	Friday	15/05/2026	Saturday	16/05/2026						
Whit Monday	Monday	25/05/2026	Tuesday	26/05/2026	Wednesday	27/05/2026	Thursday	28/05/2026	Friday	29/05/2026	Saturday	30/05/2026
German Unity Day	Saturday	03/10/2026										
Reformation Day	Saturday	31/10/2026										
Christmas Day	Friday	25/12/2026	Thursday	24/12/2026	Wednesday	23/12/2026	Tuesday	21/12/2026	Monday	21/12/2026	Saturday	19/12/2026
Boxing Day	Saturday	26/12/2026										
New Year's Day 2027	Friday	01/01/2027	Saturday	02/01/2027								

You can find more information on the SDS website at www.sds-schwerin.de and on the SAS website at www.sas-schwerin.de

Kranweg	Werdervorstadt I
Krebsbachring	Krebsförden II
Krebsförden Tannen	Krebsförden II
Krebsförden Weg	Görries II
Krösnitz	Ostorf
Krugwiese	Ostorf
Küchengartenweg	Ostorf
Kuckuckstr.	Neumühle II
Kühls Acker	Krebsförden
Kurze Badlow	Görries II
Kurze Str.	Gartenstadt I
L Lagerstr.	Werdervorstadt I
Landesrabbiner-Holdheim-Str.	Altstadt I
Landreiterstr.	Schelfstadt II
Lange Badlow	Görries II
Lange Reihe	Neumühle II
Langer Berg	Gartenstadt II
Lankower Hege	Lankow III
Lankower Str.	Lankow I
Lärchenallee	Friedrichsthal I
Lärchenweg	Friedrichsthal I
Lehmstr.	Schelfstadt II
Leibnizstr.	Mueßer Holz
Lennéstr. 1	Altstadt II
Lennéstr. 1A-5	Ostorf
Leonhard-Frank-Str.	Weststadt I
Lerchenstr.	Neumühle II
Lessingstr.	Weststadt I
Lilienring	Gartenstadt II
Lilienthalstr.	
11-51 (odd numbers only)	Görries II
53-105 (odd numbers only)	Neumühle I
2-50A (even numbers only)	Görries II
50B-60 (even numbers only)	Neumühle I
Lindenstr.	Schelfstadt II
Lindhorst	Wüstmark I
Lischstr.	Ostorf
Lise-Meitner-Str.	Mueßer Holz
Lobedanzgang	Altstadt II
Lomonossowstr. 1-9	Mueßer Holz
Lomonossowstr. 15	Mueß
Lortzingstr.	Paulsstadt II
Löwenplatz	Weststadt II
Löwenthalstraße	Werdervorstadt I
Lübecker Str.	
3-29 (odd numbers only)	Altstadt I
31-119 (odd numbers only)	Paulsstadt III
121-263 (odd numbers only)	Weststadt III
265-289 (odd numbers only)	Lankow I
4-44 (even numbers only)	Altstadt I
46-132 (even numbers only)	Paulsstadt III
134-266 (even numbers only)	Weststadt III
268-278 (even numbers only)	Lankow I
Lübstorfer Weg	Wickendorf
Lucie-Höflich-Str.	Werdervorstadt I
Ludwig-Bölkow-Str.	Göhrener Tannen
Ludwigsluster Chaussee	
1-31 (odd numbers only)	Großer Dreesch
33-57 (odd numbers only)	Göhrener Tannen

2-72 (even numbers only)	Gartenstadt I
Lutherstr.	Ostorf
Lützower Ring	Friedrichsthal I
Lützower Ring 44, 46 and up	Friedrichsthal II
M Magdeburger Str.	Neu Zippendorf
Marie-Curie-Str.	Mueßer Holz
Marie-Hankel-Str.	Werdervorstadt I
Marienplatz	Altstadt I
Martinstr.	Altstadt I
Max-Planck-Str.	Mueßer Holz
Max-Reichpietsch-Str.	Großer Dreesch
Max-Suhrbier-Str.	Weststadt II
Mecklenburgstr.	
1-81 (odd numbers only)	Altstadt I
83-115 (odd numbers only)	Feldstadt I
2-64 (even numbers only)	Altstadt I
66-68 (even numbers only)	Feldstadt I
Medeweger Str.	Lankow II
Meisenweg	Neumühle I
Mendelejewstr.	Mueßer Holz
Meta-Sander-Str.	Werdervorstadt I
Mettenheimerstr.	Gartenstadt I
Michael-Faraday-Str.	Mueßer Holz
Mittelfeld	Gartenstadt II
Mittelstelle	Görries I
Mittelweg	Weststadt III
Molkereistr.	Paulsstadt III
Möllner Str.	Lankow II
Moorbrinker Weg	Friedrichsthal I
Moritz-Wiggers-Str.	Paulsstadt III
Möwenburgstr.	
1-27 (odd numbers only)	Werdervorstadt I
33-67 (odd numbers only)	Lewenberg I
2-72 (even numbers only)	Werdervorstadt I
Mozartstr.	Paulsstadt I
Mueß Ausbau	Mueß
Mueßer Bucht	Mueß
Mühlenscharm	Neumühle III
Mühlenstr.	Schelfstadt I
Mühlentwiete	Weststadt I
Müllerstr.	Paulsstadt II
Münzstr.	Schelfstadt II
N Nachtigallenstr.	Neumühle I
Nedderfeld	Mueß
Neu Pampow	Wüstmark II
Neu Zippendorf	Neu Zippendorf
Neubrandenburger Str.	Neu Zippendorf
Neue Gartenstadt	Gartenstadt I
Neumühler Str.	Neumühle I
Neumühler Weg	Lankow I
Newtonstr.	Mueßer Holz
Niels-Bohr-Str.	Mueßer Holz
Niels-Stensen-Str.	Mueßer Holz
Nienmarker Weg	Friedrichsthal I
Nikolaus-Otto-Str.	Wüstmark II
O Oberer Kamp	Warnitz
Obotritening	
17-19A (odd numbers only)	Weststadt III
49-249 (odd numbers only)	Weststadt II

40-64 (even numbers only)	Paulsstadt IV
74-132 (even numbers only)	Paulsstadt I
134-170 (even numbers only)	Paulsstadt II
Osterberg	Ostorf
Ostorf Ufer	Feldstadt II
Otto-Hahn-Str.	Wüstmark II
Otto-von-Guericke-Str.	Mueßer Holz
Otto-Weltzien-Str.	Görries II
Pabsberg	Warnitz
Pampower Str. 1-9	Krebsförden II
Pampower Str. 50-76	Wüstmark II
Pankower Str.	Neu Zippendorf
Pappelgrund	Lewenberg II
Parchimer Str.	Neu Zippendorf
Parkweg	Ostorf
Pasewalker Str.	Lankow I
Paulsdamm	Wickendorf
Paulsdammer Weg	Wickendorf
Paulshöher Ring	Ostorf
Paulshöher Weg	Ostorf
Pawlowstr.	Mueßer Holz
Pecser Str.	Neu Zippendorf
Perleberger Str.	Neu Zippendorf
Pestalozzistr.	Paulsstadt IV
Pfaffenstr.	Schelfstadt I
Pilaer Str.	Neu Zippendorf
Pingelshäger Str.	Friedrichsthal I
Pirolweg	Neumühle III
Plater Str.	Neu Zippendorf
Platz der Freiheit 1-5	Paulsstadt III
Platz der Freiheit 6-20	Paulsstadt I
1-25 (odd numbers only)	Feldstadt II
4-10 (even numbers only)	Feldstadt II
12-14 (even numbers only)	Ostorf
Plöner Str.	Lankow II
Postweg	Wickendorf
Potsdamer Str.	Neu Zippendorf
Prerower Ring	Lankow I
Puschkinstr.	
1-45 (odd numbers only)	Schelfstadt II
47-81 (odd numbers only)	Altstadt I
2-30 (even numbers only)	Schelfstadt II
32-64 (even numbers only)	Altstadt I
Querstr.	Feldstadt I
Rahlstedter Str.	Lankow II
Räthenweg	Zippendorf
Ratsteich	Weststadt II
Ratzeburger Str.	Lankow I
Rebhuhnweg	Neumühle III
Reiferbahn	Altstadt II
Reihe 1	Lankow I
Reihe 2	Lankow I
Reutzstr.	Paulsstadt III
Ricarda-Huch-Str.	Werdervorstadt I
Richard-Wagner-Str.	Weststadt I
Ritterstr.	Altstadt I
Robert-Beltz-Str.	Weststadt III
Robert-Blum-Str.	Lewenberg II

Robert-Bunsen-Str.	Wüstmark II
Robert-Havemann-Str.	Großer Dreesch
Robert-Koch-Str.	Werdervorstadt II
Robert-Stock-Str.	Wüstmark II
Rogahner Str.	Görries I
Röntgenstr.	Schelfstadt I
Rosa-Luxemburg-Str.	Paulsstadt IV
Rosenstr.	Gartenstadt I
Rostocker Str.	Neu Zippendorf
Rudolf-Breitscheid-Str.	Paulsstadt I
Rudolf-Diesel-Str.	Wüstmark II
Rudolf-Tarnow-Str.	Krebsförden II
Rugenseer Weg	Friedrichsthal I
S Sacktannen	Sacktannen
Salzstr.	Altstadt I
Sandstr.	Paulsstadt II
Schäferstr.	Feldstadt I
Schall-und-Schwencke-Weg	Werdervorstadt I
Schelfmarkt	Schelfstadt II
Schelfstr.	Schelfstadt II
Schillerstr.	Weststadt I
Schlachterstr.	Altstadt I
Schlehenstr.	Friedrichsthal I
Schleifmühlenweg	Ostorf
Schleswiger Str.	Lankow II
Schliemannstr.	Schelfstadt II
Schloßgartenallee	Ostorf
Schloßstr.	Altstadt II
Schmiedeberg	Wickendorf
Schmiedestr.	Altstadt I
Schnitterwiese	Medewege
Schönfelder Weg	Friedrichsthal II
Schulstr.	Schelfstadt I
Schulzenweg	Görries I
Schusterstr.	Altstadt II
Schwalbenstr.	Neumühle II
Schwälkenberg	Werdervorstadt II
Schwaneninsel	Werdervorstadt II
Schweinemarkt	Schelfstadt I
Schweriner Str.	Wüstmark I
Sebastian-Bach-Str.	Weststadt I
Seeblick	Werdervorstadt II
Seehofer Str.	Wickendorf
Seelust	Wickendorf
Seestr.	Feldstadt I
Seitenweg	Medewege
Semmelweisstr.	Werdervorstadt II
Severinstr.	
1-25 (odd numbers only)	Paulsstadt IV
27-31 (odd numbers only)	Paulsstadt I
2-28 (even numbers only)	Paulsstadt IV
30-36 (even numbers only)	Paulsstadt I
Siedlerweg	Lewenberg II
Siedlung	Lankow II
Siegfried-Marcus-Str.	Wüstmark II
Siemensplatz	Sacktannen
Silberberg	Warnitz
Slüterufer	Ostorf
Sodemannscher Teich	Lankow III

Sonnenkamp	Krebsförden I
Sonnenweg	Zippendorf
Speicherstr.	Werdervorstadt I
Sperlingsweg	Neumühle I
Spießordamm	Schelfstadt I
Stadionstr.	Ostorf
Starenweg	Neumühle I
Steinstr.	Paulsstadt I
Stern Buchholz	Göhrener Tannen
Stieglitzweg	Neumühle I
Stiftstr.	Feldstadt I
Stillfriedstr.	Lewenberg I
Stralsunder Str.	Neu Zippendorf
T Tallinner Str.	Neu Zippendorf
Tannhöfer Allee	Ostorf
Tappenhagen	Altstadt I
Taubenstr.	Schelfstadt II
Theaterstr.	Altstadt I
Töpferberg	Feldstadt I
Touristenweg	Friedrichsthal I
Trebbower Str.	Warnitz
Tulpenweg	Gartenstadt II
Turower Ring	Neumühle I
U Ueckermünder Str.	Lankow I
Uhlennest	Neumühle I
Ulmenweg	Lankow IV
Usedomer Str.	Lankow I
V Vaasaer Str.	Neu Zippendorf
Vidiner Str.	Neu Zippendorf
Virchowstr.	Werdervorstadt II
Von-der-Schulenburg-Str.	Großer Dreesch
Von-Flotow-Str.	Weststadt II
Von-Stauffenberg-Str.	Großer Dreesch
Von-Thünen-Str.	Paulsstadt II
Vor dem Wittenburger Tor	
1-11 (odd numbers only)	Weststadt II
13	Neumühle I
2-18 (even numbers only)	Neumühle I
Vor den Wiesen	Wüstmark I
Vossens Tannen	Krebsförden II
Voßstr.	Paulsstadt II
W Wacholderweg	Lankow IV
Wachtelweg	Neumühle III
Waisengärten	Werdervorstadt II
Waldschulweg 1	Zippendorf
Waldschulweg 2-40	Ostorf
Waldweg	Friedrichsthal I
Wallstr.	
1-41 (odd numbers only)	Altstadt II
45-67 (odd numbers only)	Paulsstadt II
2-46 (even numbers only)	Feldstadt I
50-68 (even numbers only)	Paulsstadt II
Walnußweg	Lankow IV
Walther-Rathenau-Str.	Werdervorstadt II
Warnitzer Str.	Friedrichsthal I
Wasserstr.	Görries II
Weidenweg	Friedrichsthal I
Weinbergstr.	Ostorf
Weißdornweg	Friedrichsthal I

Wendelstorfer Weg	Friedrichsthal I
Wendenhof	Wickendorf
Werderstr.	
1-1A	Werdervorstadt II
3-89 (odd numbers only)	Schelfstadt II
2-76 (even numbers only)	Werdervorstadt II
99-143	Altstadt I
Werkstr.	Wüstmark II
Werner-Seelenbinder-Str.	Weststadt I
Werner-von-Siemens-Str.	Wüstmark II
Wickendorfer Markt	Wickendorf
Wickendorfer Str.	Medewege
Wiesengrund	Krebsförden II
Wiesenhof	Wüstmark I
Wiesenberg	Zippendorf
Wilhelm-Hennemann-Str.	Gartenstadt I
Wilhelm-Maybach-Str.	Wüstmark II
Willi-Bredel-Str.	Weststadt I
Wismarsche Str.	
107-129 (odd numbers only)	Altstadt I
133-185 (odd numbers only)	Paulsstadt III
189-317 (odd numbers only)	Lewenberg I
321-405 (odd numbers only)	Lewenberg II
106-134 (even numbers only)	Altstadt I
136-194 (even numbers only)	Paulsstadt III
198-298B (even numbers only)	Lewenberg I
300-392 (even numbers only)	Lewenberg II
400	Medewege
Wittenberger Str.	Neu Zippendorf
Wittenburger Str.	
15-37	Altstadt I
39-97 (odd numbers only)	Paulsstadt II
99-121 (odd numbers only)	Weststadt II
40-104 (even numbers only)	Paulsstadt II
106-122 (even numbers only)	Weststadt II
Wolffschlucht	Friedrichsthal I
Wolgaster Str.	Lankow I
Wossidostr.	Weststadt III
Wuppertaler Str.	Neu Zippendorf
Zeisigweg	Neumühle III
Zeppelinstr.	Görries II
Ziegeliehweg	Lankow I
Ziegelhof	Lankow II
Ziegelseepark	Werdervorstadt I
Ziegelseestr.	Werdervorstadt I
Ziegelwerder	Mueß
Ziegenmarkt	Schelfstadt II
Zingster Ring	Lankow I
Ziolkowskistr.	Mueßer Holz
Zu den Störwiesen	Mueß
Zum Alten Bauernhof	Mueß
Zum Bahnhof 2-11	Paulsstadt III
Zum Bahnhof 13-43	Paulsstadt IV
Zum Birkenhorst	Krebsförden I
Zum Kirschenhof	Warnitz
Zum Reppin	Mueß
Zum Schulacker	Krebsförden I
Zur Feuerwache	Wickendorf



Mobile hazardous waste unit route plan

The following hazardous material collection points will be visited by the mobile hazardous waste unit:

- **Feldstadt**
Bertha-Klingberg-Platz
- **Friedrichsthal**
Car park in Wolfsschlucht
- **Görries**
Lilienthalstraße
- **Mueß**
Zum Alten Bauernhof
- **Neumühle**
Treppenberg next to the glass container
- **Neu Zippendorf**
Berliner Platz (lower part)
- **Schelfstadt**
Schelfmarkt/Lindenstraße
- **Warnitz**
Trebbower Straße 2
- **Werdervorstadt**
Bornhövedstraße 71
- **Weststadt**
Supermarket on Bertolt-Brecht-Straße
- **Wickendorf**
Lübstorfer Weg 6-12

You can find up-to-date information on dates at www.sds-schwerin.de.

Hazardous materials are to be given to the mobile hazardous waste unit specialists in person at collection times.

Leaving waste at the collection point ahead of time is considered illegal waste disposal and will result in a fine.

Please note:

Bring your hazardous materials to the mobile hazardous waste unit in sealed, leak-proof containers.



Disposal of electronic waste

Large retailers are obligated to take back electrical and electronic items. "Large" retailers are businesses which offer electrical and electronic items on a sales space of more than 400 m² and online retailers with shipping space and a warehouse of this size. The take-back obligation applies when an appliance of the same type is purchased and items must be taken back free of charge. In addition, the large retailers must take back small appliances (no edge length greater than 25 cm) without such an appliance being purchased. The new electrical and electronic equipment act (E-

ektroG3) has been in force since 2022 and expands the take-back possibilities for old electrical and electronic appliances.

What is included in electrical waste?

Electric ovens, washing machines, dishwashers, fridges and freezers, televisions, radios, computers, lawnmowers, small electrical appliances, mobile phones, CD or MP3 players, microwaves, electrical and electronic toys and disposable electronic cigarettes (e-cigarettes). Photovoltaic elements from private households can be taken to the north and south recycling centres.

What is not included in electrical waste?

Scrap metal, batteries and battery packs. If these are not enclosed within the appliance, they must be removed before the appliance is returned.

How do we dispose of electrical waste?

Via the retailer ("large" seller/retailer), the public collection points at recycling centres or via the bulky waste collection. This is accepted free of charge from households. Electrical waste must not be disposed of with household waste.



Lithium-ion batteries do not belong in residual waste

Defective lithium-ion batteries have an increased risk of self-ignition and may result in fires during transport or at a waste sorting plant. This may result in poisonous vapours, with the consequence being economic damage to vehicles and facilities. Therefore, the rule is: remove lithium-ion batteries from old devices BEFORE disposal.

Battery packs are deemed problem waste can be taken to the recycling centre (page 9) or the Schadstoffmobil. Disposal is free of charge.

Appliances with built-in battery packs must be collected separately.

Disposal of problematic waste

What is problematic waste?

Contaminated household waste, such as batteries, paint, varnish, cleaning agents, rechargeable batteries and even energy-saving bulbs.

Where can problematic waste be disposed of?

- Only at
- the recycling centres (more on page 9)
- the mobile hazardous waste unit

Never via your grey bin!

How much does it cost?
It is free of charge.



30 years of spring cleaning – getting stuck in together for a clean Schwerin

For more than three decades now, Schwerin's spring clean has taken place just before Easter. From modest beginnings, a strong and reliable community has developed over the years, where everyone is committed to cleanliness in the city.

In the cleaning week from 16 March 2026 to 21 March 2026, everyone can pick up their red rubbish bag and tidy up their own neighbourhood, helping to keep our beautiful state

capital looking friendly. From 9 March 2026, the citizens' office and other bag collection points give out the rubbish bags.

Rubbish can be collected from all public areas, lawns and paths, playgrounds and parks in the entire city area. The cleaning week ends on 21 March 2026 with the scrubber party, which takes place on Bertha-Klingberg-Platz, and everyone who helped in the spring clean is invited.

Photo competition with great insights into the collection campaign

Nurseries, schools, clubs, businesses, but also families and friends – everyone can get involved in the photo competition and show how they are freeing the city of rubbish and making it an even nicer place to live. Fantastic prizes are given out to some lucky participants.



Whether a place of calm and relaxation or a place for fun and sport: Schwerin's green spaces attract everyone. But wherever many people come together, little acts of carelessness have big consequences – and accumulate into a mountain of rubbish. The most effective way of tackling the rubbish is the same way that it was generated in the first place: a little at a time. Our actions therefore play a part in how the green spaces on our doorstep look.

Bag dispensers for dog poo disposal

SDS has set up bellou poo bag dispensers at 80 locations, mostly near green spaces and footpaths. These are replenished weekly.

You can also find free dog poo bags at:

Customer centre at the Stadtwerke
Mecklenburgstraße 1 and
Eckdrift 43-45

Recycling centres, see page 9

Citizens' office,
Am Packhof 2-6



Schwerin. Beautiful. Clean.

In our beautiful state capital, there are around 1000 litter bins along pavements and on green spaces. Schwerin's public transport system equips 210 bus stops with litter bins.

There are also other waste disposal options provided by housing associations, clubs and tradespeople. For some years now, twelve „Mr Fill“ containers have been supporting locations with a lot of public traffic. The rubbish is compacted in these containers and can hold around 120 litres of waste. In comparison, a standard waste bin can only hold around 40 litres of waste.

Unfortunately, experience has shown that more litter bins do not contribute to greater cleanliness. Again and again it has been observed that pizza boxes or rubbish bags have been placed next to an empty litter bin.

So what to do?

Sometimes we ask ourselves what has happened to the good old custom of taking rubbish home and disposing of it there? We don't know, but we would like to see this habit revived. It would be even more helpful if we didn't generate waste in the first place and made a conscious effort to use reusable packaging or unpackaged goods.

The more people who take part, the better.

And finally - cigarette butts belong in the rubbish.

Cigarette ends: an issue that we and many Schwerin residents care deeply about. This isn't about the smoking itself. The remnants of the tobacco consumption left lying around is viewed as a constant annoyance. Many smokers stub out their cigarettes on the tops of rubbish

bins and just leave them there.

Then the wind picks up the cigarette ends left on top of the rubbish bin and spreads them around. This adds to the street sweeper debris and endangers the soil and water reserves when the cigarette ends get into the environment. For this reason, please stub them out and throw them in the bin.

We therefore expressly ask you to remove the embers and throw the butts in the rubbish bin. Ashtrays have been installed on many litter bins. The number is gradually being increased.

With the help of an AI system, the street cleaning vehicle can digitally record the type and volume of street rubbish. After analysing the data, litter bins with ashtrays can then be placed in the right place. Another step towards greater cleanliness in Schwerin, the capital of life.

Please don't!





Old clothes containers are available at various recycling collection points in the city area. You can find all the collection points on our website at sds-schwerin.de or here directly:



The furniture exchange – too good for bulky waste

When clearing houses or moving house, you often ask yourself the question – “What should I do with the furniture that’s still too good for bulky waste?”

ANKER SOZIALARBEIT
Gemeinnützige GmbH

“ANKER” from Vielfalter gGmbH is the right point of contact in this regard. The furniture exchange picks up donated furniture for free which is then refurbished in the workshop and distributed among second-hand shops or sold in the showroom. Anyone looking to buy affordable furniture will find what they need here.

Vielfalter

The offering ranges from sofas to kitchen cupboards. You can find more information online at:
www.vielfalter-schwerin.de

- **ANKER furniture exchange**
Rogahner Straße 4
19061 Schwerin
- **Arbeitslosenverband second-hand shop**
Perleberger Straße 22
19063 Schwerin
- **Anker in Schwerin “Bunte Kiste”**
Große Wasserstraße 39
19053 Schwerin
- **Second-hand shop**

The thing about old textiles – it’s all about conscious donations!

The State Capital Schwerin is conducting an old clothes collection in cooperation with several charitable institutions (currently: Arbeitslosenverband, Dobbertin Abbey, DRK, Zukunftswerkstatt e.V.). For this, there are labelled collection containers available within the city area.

The current situation in the textile recycling market presents a huge challenge. In Schwerin, this has led to old clothes containers being removed from some sites. The reason behind the fraught situation is that the proceeds have dropped very sharply, and many collection services can no longer get rid of the textiles through old clothing recycling schemes. The key cause of this is the worsening quality of old textiles due to

“fast fashion”. At the same time, the quantity of garments being thrown out is increasing due to high rates of consumption, which means that bags are frequently stacked in front of the remaining containers. If possible, use an old clothes container nearby. The EU-wide obligation to separate and collect textile waste, in effect since 1 January 2025, has caused considerable uncertainty among consumers. The fundamental objective is, and will always be, to reuse or recycle old textiles. This is why only usable clothing, shoes, bedding and home textiles should be put into old clothes containers. Soiled, worn or wet textiles should be disposed of via general waste.

■ Your contribution to effective old textile recycling:

Please always pack your clean and usable old textiles in a plastic bag and throw it into the old clothes container. This prevents soiling and you make a difference as to whether the old textiles can also really be used again in the future.

■ **Tip:** Unpacked clothes donations cannot be recycled. This makes life more difficult for the collectors. They then generally have to pick out the loose items by hand and dispose of them as general waste.

■ **Extra tip:** The conventional method of drying laundry on the line is gentle on the fibres and prolongs the useful life of your items of clothing.

■ Know the reputable collectors:

The old clothes containers from charitable collectors such as the Arbeitslosenverband, Dobbertin Abbey, DRK and Zukunftswerkstatt e.V. use their proceeds for charitable purposes. In other places, you can identify reputable collections by the quality seal “FAIRwertung”.

■ **Tip:** Also consider using flea markets and clothing exchanges to give your clothes a second chance at life.

Please don't!



This is how conscious clothing donation works:

- Well looked-after, wearable clothing: outer clothing (also leather, furs) and underwear
- Shoes and footwear (paired)
- Other accessories (belts, hats, beanies, scarves, towels, gloves, handbags, fabric tote bags and rucksacks)
- Clean bedding: down duvets, quilts, pillows, mattress protectors
- Clean home textiles: bed linens and table linens, cloths, hand towels, dish towels, bath towels, decorative fabrics, other coverings, drapes and curtains



- Highly damaged textiles, textiles with holes, torn textiles
- Heavily soiled textiles
- Wet textiles
- Fabric and sewing remnants or textiles that have been cut up
- Odd shoes



■ **Tip:** Before donating clothing, ask yourself: would I still give this to a friend or acquaintance? If yes, throw it in! If not, dispose of it via general waste.

In addition to the possibilities of donating clothes via old clothes containers, you may also hand your clothes donations to the clothing stores of the cooperation partners directly. They then give the old clothes to those who need them for a small fee.

Clothing store addresses:

- DRK clothing store
- Zukunftswerkstatt e.V. clothing store
- Dobbertin Abbey
- Arbeitslosenverband Schwerin
- Haus der Begegnung

With your conscious clothes donations, you are supporting social projects, conserving resources and making an active contribution to protecting the environment.



Road and pavement cleaning

Clean streets and footpaths are of particular interest to cities, communities and residents.

The cleaning of footpaths and the emptying of public rubbish bins are all part of a clean city.

The statute on fees for road cleaning. The obligations of the city and the residents are designated according to cleaning category in the statute on road cleaning depending on the importance and requirements.

Cleaning work on public streets and places,

The tasks of road and pavement cleaning are defined in the statute on road cleaning and

Overview of the obligations of the city and residents from the applicable statute:

Cleaning categories	Obligation of the city	Obligation of the residents
Cleaning category 0	Clean the entire road and the pavement 6 x per week	–
Cleaning category 1	Clean the road 3 x per week	Clean the footpaths, bike paths, grass verges, parking bays, etc. on a weekly basis
Cleaning category 2	Clean the road on a weekly basis	Clean the footpaths, bike paths, grass verges, parking bays, etc. on a weekly basis
Cleaning category 3	Clean the road every 14 days	Clean the footpaths, bike paths, grass verges, parking bays, etc. every 14 days
Cleaning category 4	Clean the road every four weeks	Clean the footpaths, bike paths, grass verges, parking bays, etc. every four weeks
No cleaning category	–	Clean the entire road from the property to half-way across the road every 14 days

The streets within Schwerin are assigned to individual street cleaning classes in accordance with the street cleaning statutes. Generally speaking, the residents of streets not named here are responsible for cleaning the street and pavement.

Cleaning the pavement also includes removing special contaminants, such as dog mess, weeds and waste left on the pavement. SAS mbH carries out street cle-

aning on public streets. The street cleaning calendar for the cleaning vehicles can be found online at www.sds-schwerin.de.

SDS has created a street cleaning concept for streets where constant parked cars hinder cleaning with the road sweeper. Under this concept, a one-day parking ban is put in place in 76 streets so that basic street cleaning can be carried out once a year.

A street cleaning fee is collected from the residents for the street cleaning carried out on public streets. The amount of the street cleaning fee is determined by the frequency of cleaning in a year and is set according to the street cleaning fee statutes.

Obligations with regard to winter road maintenance are also regulated in the street cleaning statutes.



Pavement cleaning – what to consider

Pavement cleaning is transferred to the residents in accordance with the statute on road cleaning.

This includes combined bike paths and footpaths, connecting paths and stairways, and sections of roadway marked as footpaths.

What needs to be done? Regularly sweeping footpaths ensures that they are free from sand and other small pieces of dirt like leaves and fruit from nearby trees. It makes no difference who owns the tree. Regular cleaning of the footpaths make them safer to use.

Sweeping dirt or leaves from the pavement on to the road is not allowed. Please dispose of whatever you sweep up in the corresponding waste containers on your property.

Weeds which sprout on footpaths must also be removed by the residents. This ensures that footpaths are also kept in a tidy condition. You can find more information in the statute on road cleaning and on our website.

Leaves collection in autumn
In streets with lots of leafy trees, the SFS supports the residents by disposing of the fallen leaves. During the period from mid-October to November, over 90 big bags and, for the first time in 2025, 80 large waste containers, are provided.

Please note:

Do not sweep waste and leaves from the pavement on to the road!



SDS winter road maintenance in numbers:

- Gritting distance of 539 km
- Street length of 283 km
- 216,400 m² pavements, steps and areas including bus stops
- 13 vehicles for the streets
- Ø 600 t of grit per season
- Ø 2000 working hours per season
- Ø 90 working days per season
- 97 public disabled parking spaces

Winter road maintenance concept

The SDS – Stadtwirtschaftliche Dienstleistungen Schwerin (Schwerin Municipal Services), operated by the city of Schwerin, is responsible for organising, carrying out and coordinating winter maintenance of the roads and footpaths in the state capital.

Schwerin's department of roads is responsible for carrying out winter road maintenance on sections of federal roads. Winter road maintenance includes removing snow, gritting packed snow and icy surfaces according to the city's actual and financial capacity and in accordance with the requirements of the state of Mecklenburg-Western Pomerania's Roads and Routes Act as well as the applicable legal regulations. Schwerin's winter road maintenance concept was designed as a basis for action and organisation. The responsibility of the city of Schwerin continues to exist exclusively in accordance with the legal framework shaped by established law.

Please note:

Change your behaviour on the road in wintery road conditions!



Winter road maintenance – services and obligations

The objective of winter road maintenance is to ensure the safety of public roads and footpaths. Every road user has the obligation to ensure road safety by adjusting their behaviour according to the weather conditions when driving in the winter.

The statute on road cleaning for the city of Schwerin determines the scope of winter road maintenance services. The basis for this is the winter maintenance concept introduced in 2017.

The city's winter road maintenance obligations

The SDS, which is operated by the city, carries out winter road maintenance on important public roads as a municipal provider. Traffic routes are weighted according to their importance for the communal infrastructure and organised into gritting levels. Winter services are classified using the following characteristics:

Level A

- Top priority, approx. 290 km
- Main roads and thoroughfares,
- Bus routes, roads with public transport,
- Roads with heavy commuter traffic to and in industrial and commercial areas,
- Roads with steep gradients or steep inclines

Level B

- Second priority, approx. 146 km
- Connecting roads,
- Residential streets,
- Roads by schools

Level C

- Third priority, approx. 103 km
- Other roads in residential and commercial areas



No communal winter road maintenance

- Private roads, traffic-calmed roads, service roads,
- Roads on which winter road maintenance technology cannot be used

The city's winter maintenance obligations for footpaths

The city bears responsibility for the winter maintenance on footpaths with high public significance.

This includes:

- Pedestrian crossings
- Public places
- Transfer points for local public transport
- Tram and bus stops without residents nearby
- Footpaths in boulevard and promenade areas
- Pavements without immediate adjoining residential properties
- Major cycle routes

What will be done?

- Clearing and gritting the roads according to the gritting level by using salt and brine
- If required for road safety, clearing snow from the gritted areas
- Gritting footpaths and bike paths

When?

In accordance with the statute on road cleaning, footpath maintenance takes place between 7:00 am and 8:00 pm. Roads and bike paths will be cleared according to capacity in this period.

Any black ice forming after 8:00 pm will be removed by 7:00 am on the following day.

Winter road maintenance – obligations of owners of adjoining properties

The duties of residents are related to public areas along the width of their property and include the following areas:

- Pavements
- Combined pavement and cycle paths
- Local transport stops in the pavement area
- Pedestrian areas on roads without pavements at a width of 1.50 m
- Half the width of traffic-calmed sectors

What do we have to do?

- Gritting areas to make them less slippery
- Clearing snow where required for road safety.

Which materials can be used?

- Grit,
- Sand,
- Commercially available abrasive spreading materials.
- **Do not use salt or de-icing agents!**

Why?

- The property owner is responsible for keeping the road around their property safe and they are liable for this.

When?

- Times: 7 a.m. to 8 p.m., once it has stopped snowing
- Any ice and snow which has occurred after 8 p.m. must be removed by 7 a.m. the following day.

How much do we have to do?

On the pavements, a width of 1.50 m must be gritted and cleared of snow.

If the width of the pavement is less than 1.50 m, the complete pavement width must be cleared of snow and ice.

The cleared snow must be piled up on the road side, taking up just one third of the outside of the pavement. On pavements without roads, the snow should be piled up on the pavement edge along the adjacent property.

If traffic is adversely affected due to the volume of snow, the city guarantees that the snow will be moved.

A question of liability

We all use roads and pavements. Of course, our needs and wants from winter road maintenance are all very different. Nevertheless, road safety must be the main focus. The winter road maintenance obligation for residents comes from the statute on road cleaning. Violations of this obligation may have legal consequences. Residents are liable for any accidents if they do not fulfil their obligations and may – in the event of physical injury resulting from negligence, for example – face criminal proceedings. For this reason, every property owner should arrange cover from an appropriate liability insurance provider. For more information, feel free to contact us:

Tel.:
(0385) 633 16 75



Information

- The snow on pedestrian areas is to be cleared or slipperiness decreased up to the edge of the kerb.
- Remember wheelchair users and pushchairs when carrying out winter road maintenance and ensure that they too can continue to use the pavement unimpeded.
- Owners of nearby developed land can transfer the obligation to grit the paths and roads and clear them of snow and ice to their tenants.
- It must be ensured that public transport can reach stops unimpeded.
- Putting the cleared snow on the side of the road – and thus blocking the drains, inlet pipes, water hydrants, maintenance shafts, etc. – is forbidden.

Please note:

Anyone who cannot personally fulfil their winter road maintenance obligations should use private service providers.

Imprint

Publisher

SDS – Stadtwirtschaftliche Dienstleistungen Schwerin (Schwerin Municipal Services), Operated by the state capital Schwerin
Eckdrift 43 - 45
19061 Schwerin

Print




PerCom
This product was produced using renewable energy.
Photos
creative collection, fotolia, pixabay, maxpress, SDS, Stephan Rudolph-Kramer, SAS, ALBA, Pexels, Adobe Stock, c-trace GmbH
Updated
01/2026
Subject to changes

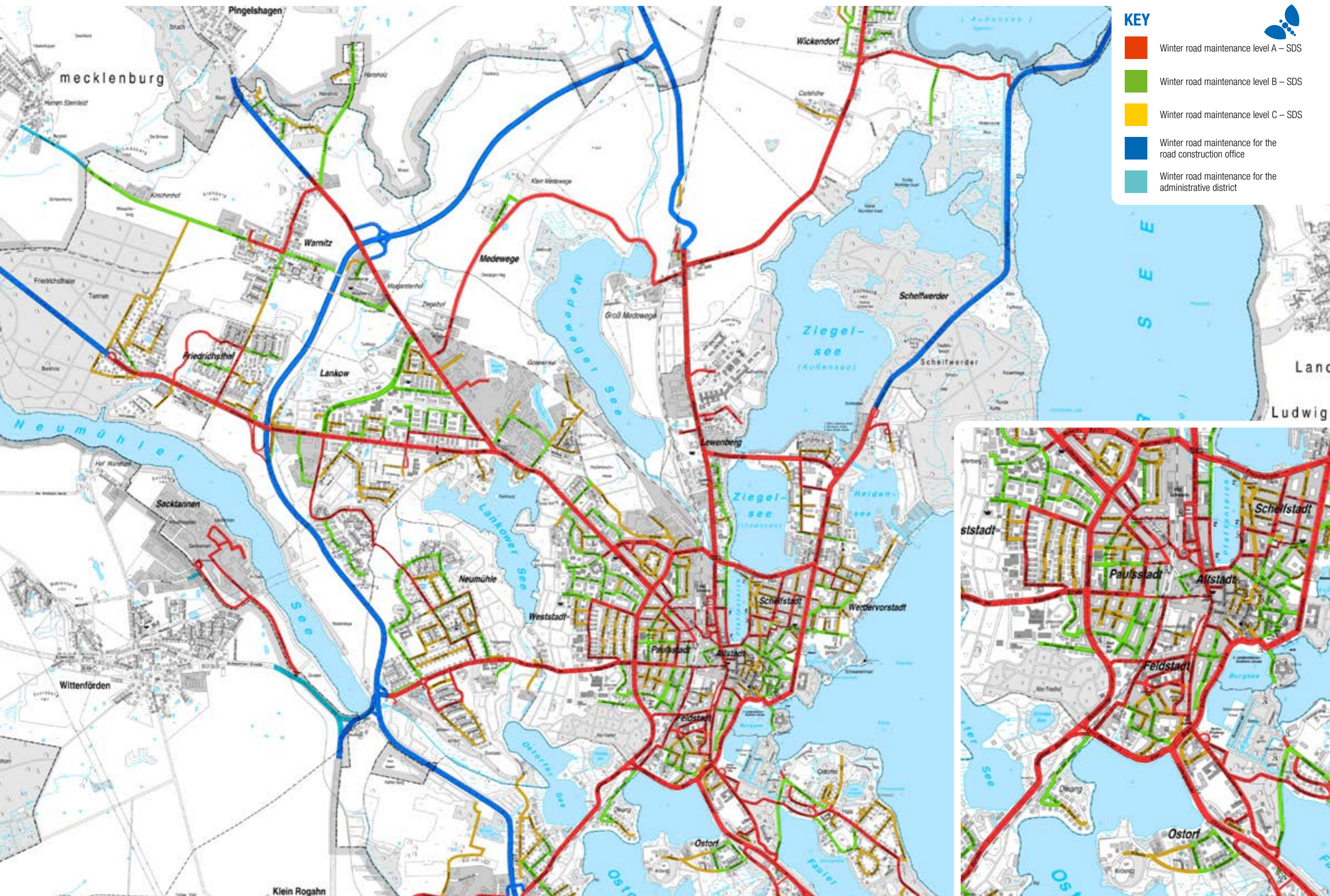


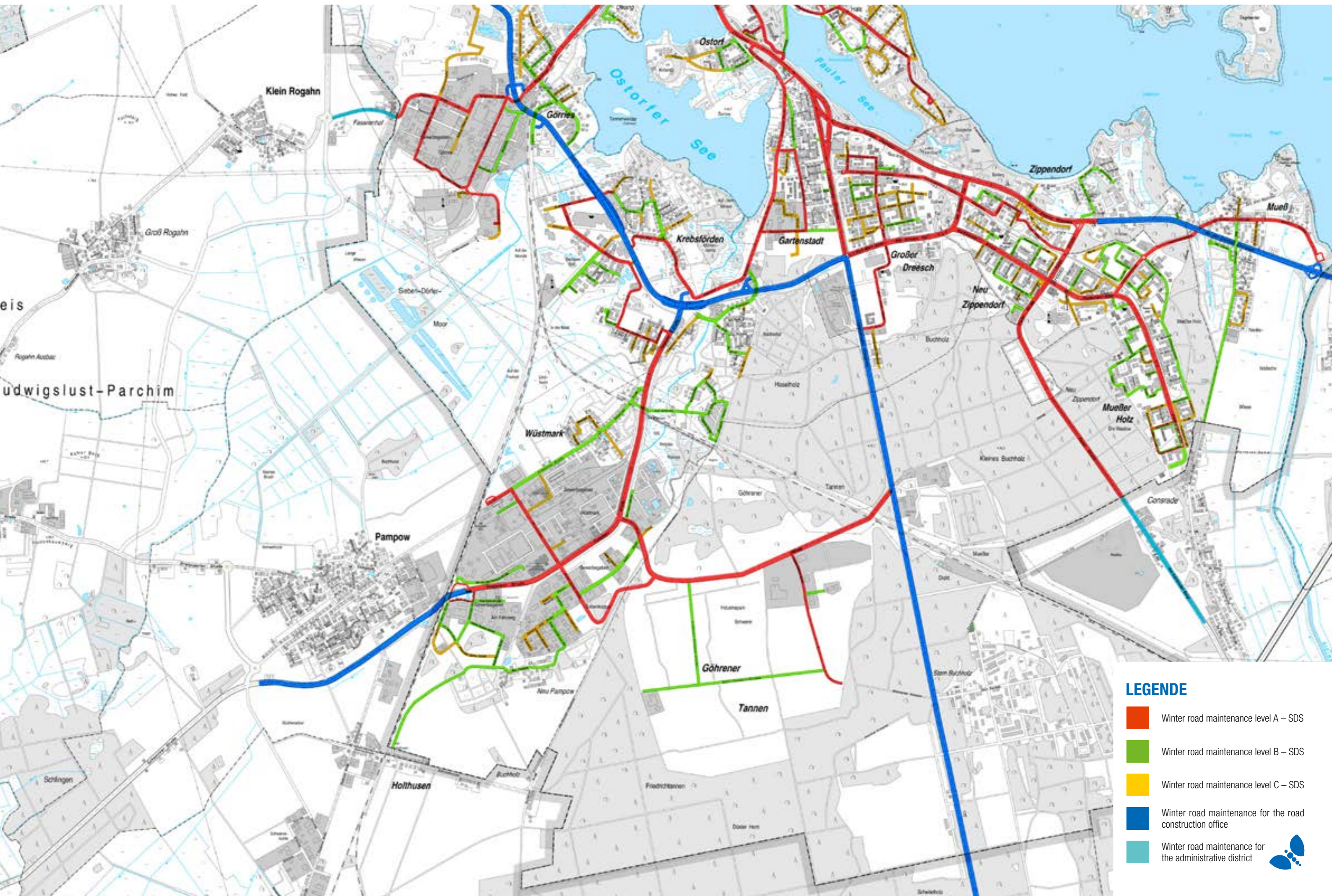
This magazine was printed on sustainable paper!



KEY

-  Winter road maintenance level A – SDS
-  Winter road maintenance level B – SDS
-  Winter road maintenance level C – SDS
-  Winter road maintenance for the road construction office
-  Winter road maintenance for the administrative district





LEGENDE

- Winter road maintenance level A – SDS
- Winter road maintenance level B – SDS
- Winter road maintenance level C – SDS
- Winter road maintenance for the road construction office
- Winter road maintenance for the administrative district



What can be disposed of where?

Explanation of abbreviations: **K** – Old clothing collection container, **B** – Construction waste **P** – Problematic waste, **SPM** – Bulky waste disposal

	See key	Recycling centres	Yellow bin/ yellow sack	Blue bin/paper container	Organic waste bin/compost	Glass container (sorted by colour)	Household waste bins	Page reference		See key	Recycling centres	Yellow bin/ yellow sack	Blue bin/paper container	Organic waste bin/compost	Glass container (sorted by colour)	Household waste bins	Page reference
Drain cleaner	P	•						7, 9	Cardboard boxes		•	•					4, 9
Rechargeable batteries	P	•						7, 9	Catalogues, brochures		•	•					4, 9
Ring binders							•	6	Cassettes							•	6
Aluminium foil and lids		•	•					7, 9	Pushchairs	SPM	•						6, 9
Plastic plant pots			•					2	Clothing	K	•						8, 9
Ash							•	6	Litter for small animals							•	6
Car batteries/tyres	P	•						7, 9	Bones							•	6
Car care products	P	•						7, 9	Button batteries	P	•						7, 9
Metal baking tins		•						9	Cosmetics packaging (plastic)			•					2
Batteries	P	•						7, 9	Crown cork bottle caps			•					2
Construction rubble	Specialist waste disposal company								7	Kitchen waste						•	6
Corrosives	P	•						7, 9	Coolant	SPM	•						9
Pictures/picture frames							•	9	Plastic packaging			•					2
Lead glass, lead crystal							•	6	Plastic products (buckets, bowls)							•	9
Flowers					•			4	Tinsel							•	6
Books				•				3, 9	Leaves							•	4
Camping furniture	SPM	•						6, 9	Leather scraps	K	•						6
Chemicals	P	•						7, 9	Glue and adhesives	P	•						7, 9
CDs/DVDs							•	6, 9	LED lamps	P	•						7, 9
Roofing felt	Specialist waste disposal company								7	Fluorescent tubes	P	•					7, 9
Disinfectants	P	•						7, 9	Solvents, thinners	P	•						7, 9
Photographic slides							•	6	Mattresses	SPM	•						6, 9
Cans (aluminium)			•					2, 9	Corn chips							•	5
Printer cartridges	P	•						7, 9	Medication							•	6
Egg cartons (cardboard)				•				3, 9	Furniture	SPM	•						6, 9
Disposable tableware			•					2	Paper			•					3, 9
Disposable syringes							•	6	Pans (metal)							•	9
Electrical and electronic devices	SPM	•						9	Plants, plant remains							•	4
Energy-saving bulbs	P	•						7, 9	Pesticides	P	•						7, 9
Bikes								9	X-ray images							•	6
Bike inner tubes/tyres							•	9	Foam packaging			•					2
Leftover paint/varnish	P	•						7, 9	Screw caps			•					2
Duvets	K	•						8, 9	Scraps, metal							•	9
Window glass	B							6	Shoes	K	•						6, 8
Films							•	6	Food waste (cooked)							•	6
Photo chemicals	P	•						7, 9	Mirrors							•	6
Photos							•	6	Toys (without electronics)							•	6
Frying fat (solid)					•			6	Spray cans (empty)			•					2
Floor coverings	SPM	•						6, 9	Vacuum cleaner bags							•	6
Garden waste/green cuttings					•			4, 9	Fabric remnants							•	6
Tableware (porcelain, ceramic, glass)							•	6, 9	Polystyrene (packaging)			•					2
Drinks cans (without deposit)			•					2	Wallpaper scraps							•	6
Drinks cartons (Tetra Pak)			•					2	Tea bags							•	4
Glass (except lead and window glass)						•	•	3, 9	Carpets							•	9
Light bulbs							•	6	Tetra Pak			•					2
Halogen lamps	P	•						7, 9	Toner cartridges	P	•						7, 9
Wood preservers and impregnating agents	P	•						7, 9	Pots							•	9
Toiletries, toilet paper							•	6	Envelopes			•					2
Insecticides	P	•						7, 9	Video cassettes							•	6, 9
Coffee filters, coffee grounds					•			4	Leftover wax							•	6
Coffee capsules, even bio-degradable ones			•				•	4	Nappies							•	6
									Newspapers, magazines			•					3, 9

Separating waste - helps to gain valuable materials

Verpackungen
Packaging
Упаковка

↓

Altpapier
Paper
Макулатура

↓

Altglas
Glass
Отходы стекла

↓

Bioabfall
Organic waste
Биоотходы

↓

Restabfall
Residual waste
Остаточные отходы

↓

Spezielle Abfälle
Special waste
Специальные отходы

↓

Separate waste – show responsibility Будьте ответственными – сортируйте отходы

Eckdrift 43-45
19061 Schwerin

E-Mail:
abfall@sds-schwerin.de

Internet:
www.sds-schwerin.de



Recycling

In 2024 a total of 42,700 tons of waste was collected from Schwerin households. Of this, 23,800 tons were intended for recycling and utilisation. This corresponds to a per-capita amount of 430 kg/resident and year (E*a) and a recycled proportion of 240 kg/E*a. Only 74.8 kg/E*a organic waste was collected and processed in the organic waste recovery system (BAVA). We can improve our recycling rate in particular through an increased, separated collection of lightweight packaging via the yellow bags and yellow bins.



Processing general waste from Schwerin's households

The general waste collected from households is taken to the SAS mbH transfer station and transhipped in effective cargo batches. From 1 June 2026, general waste will no longer be transported to IAG Ihlenberg; instead, it will be taken to Gollan Recycling GmbH in Rosenhagen. There, the input material is fed into a feed hopper, and from there, metered

onto the infed conveyor, then into the drum screen, where the material is separated into 3 fractions (coarse grain, medium grain, fine grain). Mobile sorting machines are used to remove impurities and valuable materials, which is limited to the separation of bulky plastics, materials and, in isolated cases, mineral waste. The waste is then crushed

according to prescribed specifications from the cogeneration plant in Hagenow. The fuel (refuse-derived fuel, RDF) is taken to Hagenow for thermal utilisation, and the steam generated is used as process heat for the site's own production operations. The excess steam is fed into the local power grid.

Recycling routes for recyclable materials

Waste glass

The waste glass from the public containers is collected separately according to colour – clear, green and brown – by ALBA Nord GmbH, put into temporary storage and transported to nearby glass factories for melting down.

Lightweight packaging

The lightweight packaging from the recycling containers, the yellow bags and the yellow bins, is collected by ALBA Nord GmbH and taken to the recycling operations based in the contract area. The system operator Duales System is responsible for the recycling of lightweight packaging which is sorted and recycled in their own facilities. Non-recyclable components are thermally utilised.

Bulky waste

Bulky waste is collected and pressed in a special SAS mbH vehicle. Metal parts and wood are sorted using excavators and delivered to the appropriate recycling companies according to type.

Bulky waste remnants are processed into substitute fuels.

Waste paper / cardboard boxes

Waste paper and cardboard boxes are a sought-after recyclable material on the market. SAS mbH presses material collected from households and public recycling containers into transportable bales and trades them at current prices.

Waste textiles

At present, old textiles are still collected in containers from charitable associations and sent to a recycling company. Firstly, the reusable components are removed to give to clothing stores. The remaining textiles are used to produce insulation materials and cleaning cloths in particular, predominantly for the automobile and construction industries.

Electrical appliances

Waste electrical appliances are transported to recycling plants by EAR, the foundation established by manufacturers. The city of Schwerin has taken over the collection of waste electrical appliances and uses the so-called primary treatment facility in Stern Buchholz for this purpose.

Recyclable and dangerous components are removed. Empty metal cases are sent to scrap metal recycling.

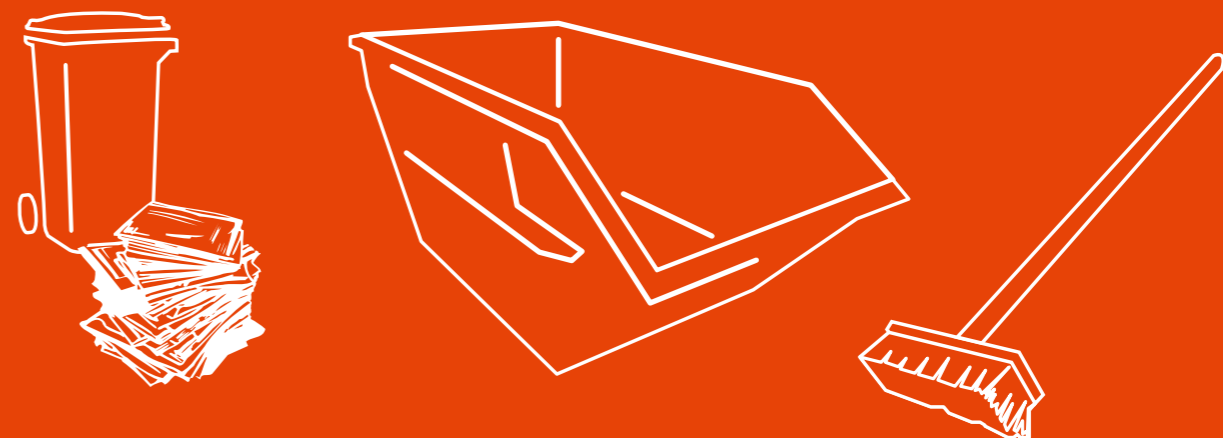
Biowaste

Biowaste is collected by SAS mbH and fermented at their treatment facility (biowaste processing plant). Biogas – which is used to generate power and heat with a combined heat and power unit – is produced here. The heat recovered is also used for the process's own heat requirements.



Please note:

Single-variety waste makes recycling easier.



EINSATZBEREIT.

FÜR DICH. FÜR SCHWERIN.



SAS

Kundenservice

Schweriner Abfallentsorgungs- und Straßenreinigungsgesellschaft mbH
Ludwigsluster Chaussee 72 | 19061 Schwerin
Telefon: 0385 5770-0 | Telefax: 0385 5770-222
service@sas-schwerin.de

Öffnungszeiten:

Mo. bis Do.: 07.00 – 16.30 Uhr | Fr.: 07.00 – 15.00 Uhr





“FOR A CLEAN SCHWERIN”

SDS – Stadtwirtschaftliche Dienstleistungen Schwerin (Schwerin Municipal Services)

Public green spaces

Public green spaces, plants for roadsides and urban squares, the forests and biotopes, sports fields and playgrounds, as well as swimming spots in the city – all of these are part of Schwerin’s urban green spaces. It is the duty of the SDS’s public green spaces division to maintain these communal facilities horticulturally and structurally, as well as to plan new green spaces and to oversee the building work.



Cemeteries and burials

Schwerin’s cemeteries are places of remembrance and mourning. At the same time, they are now also popular green spaces of relaxation and tranquillity for all generations in the middle of a lively city. SDS discharges the tasks of cemetery and burial services for the state capital with a wide range of offers. The Alte Friedhof, the Waldfriedhof and the mourning halls at the cemeteries are under the jurisdiction of SDS.



**WE TAKE ON
TRAINEES!**
Find more information at
www.sds-schwerin.de



Waste management

Whether it’s non-recyclable waste, waste glass, waste paper, furniture or organic waste, transporting it away is a logistical feat. The waste management department of the SDS has ensured smooth waste collection since 2004. Waste disposal partners are contractually obligated to carry out practical tasks, such as taking away collection containers and emptying glass containers.

Road maintenance

Schwerin’s street network includes around 350 kilometres of paths and streets. Employees in the street maintenance department of the SDS ensure that the streets are and remain in good condition. Road safety on the streets of Schwerin is of great importance, especially in winter. The annual winter road maintenance season runs from 01/11 to 15/04 for SDS.



SDS – Stadtwirtschaftliche Dienstleistungen Schwerin (Schwerin Municipal Services)

municipal enterprise operated by the state capital Schwerin

Eckdrift 43 - 45 · 19061 Schwerin

info@sds-schwerin.de · www.sds-schwerin.de